

---

# 3V-40V Vin, 150mA, 2.5uA I<sub>Q</sub>, Low-Dropout Regulator

**GFB F**

**EF D POA**

±

±

**B MDB PO A**

---

**F POA P A**

Revision 1.0: Release to production.

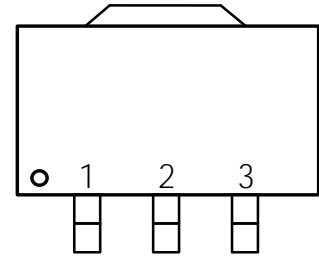
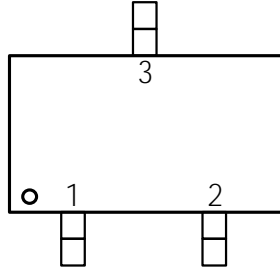
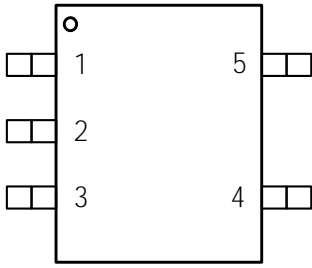
Revision 1.1: Update the thermal information and the thermal characteristic.

Revision 1.2: Update the thermal information and the thermal characteristic.

Revision 1.3: Update the TAPE AND REEL INFORMATION.

**EF DFP EF AOGP NB POA**

**ODPOG H B POA**



**A**

**OG OD PO A**

**P D GXX A**


**P D GXX A**


**P D GXX A**


**A**

**A**

**A**

---

FDPNNFOEFEP F B OHADPOE PO A

--	--	--	--	--

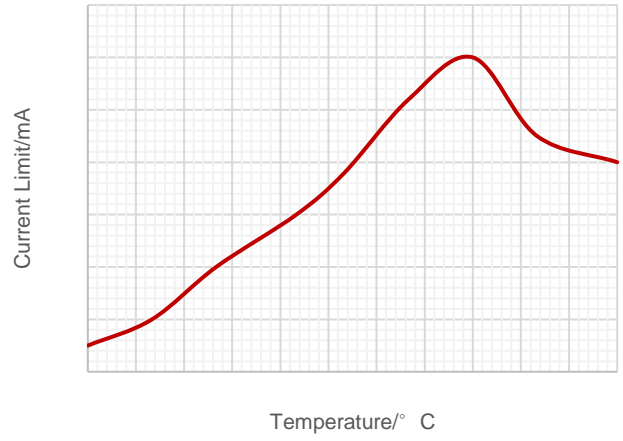
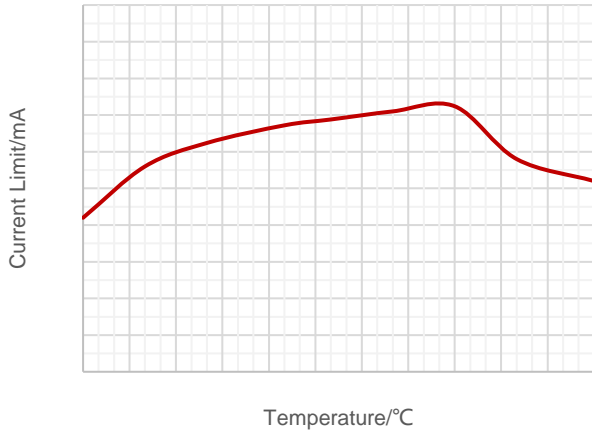
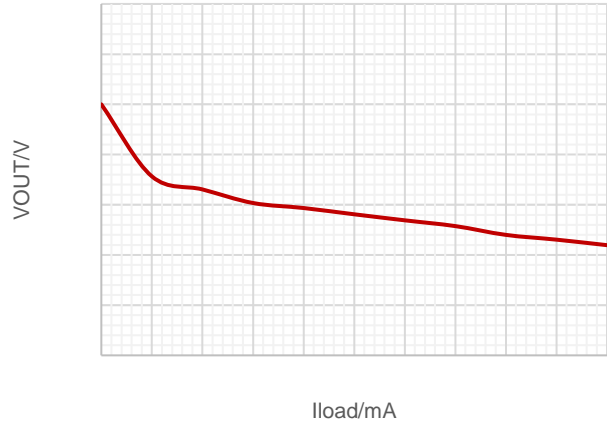
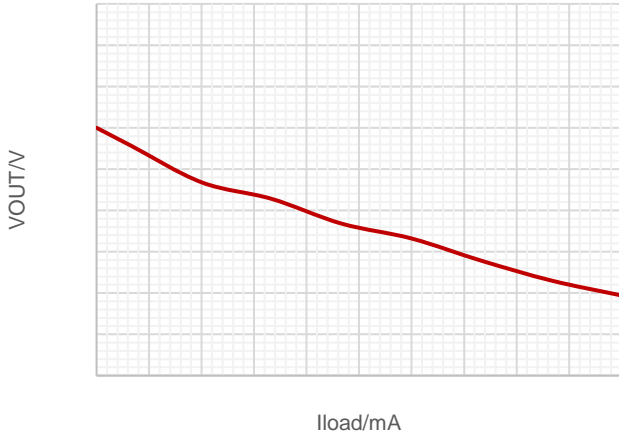
---



---

DBM DI B BD F D A

DBM DI B BD F D A A

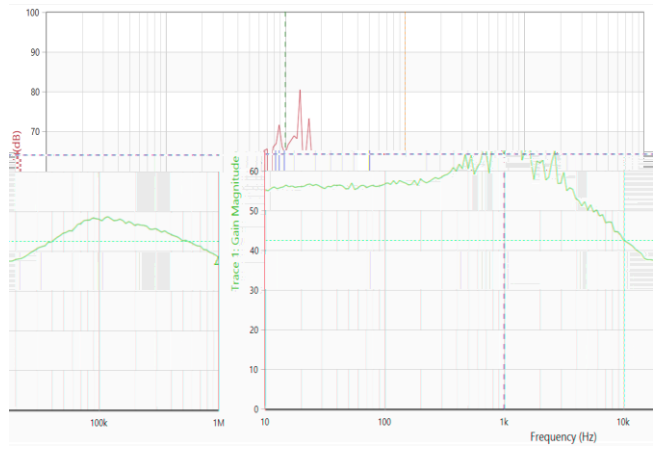
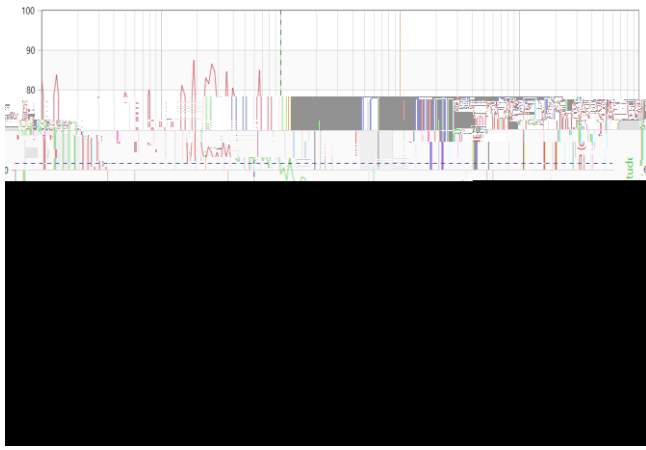
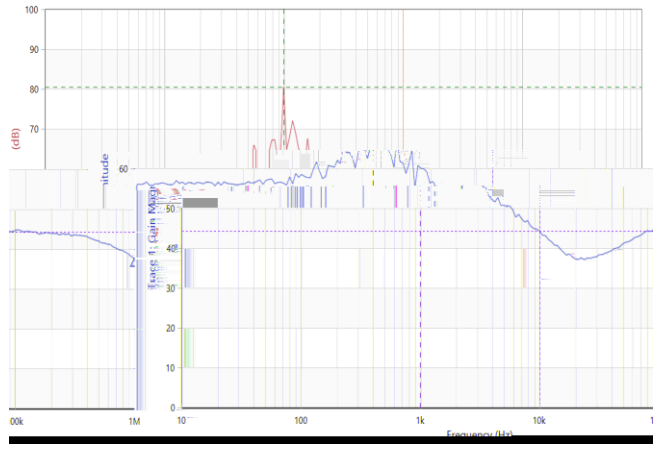
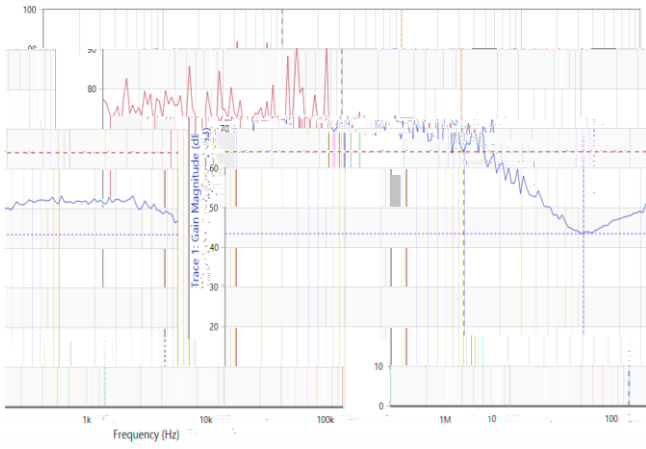
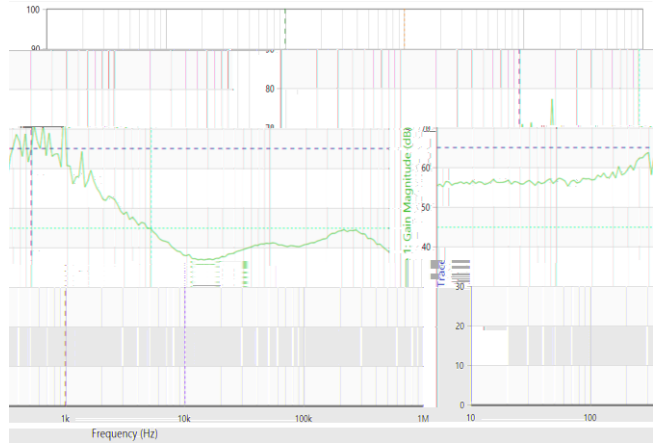
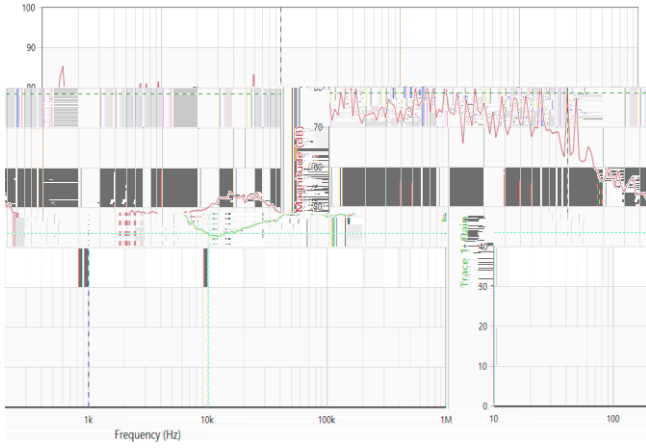


A  
A

A

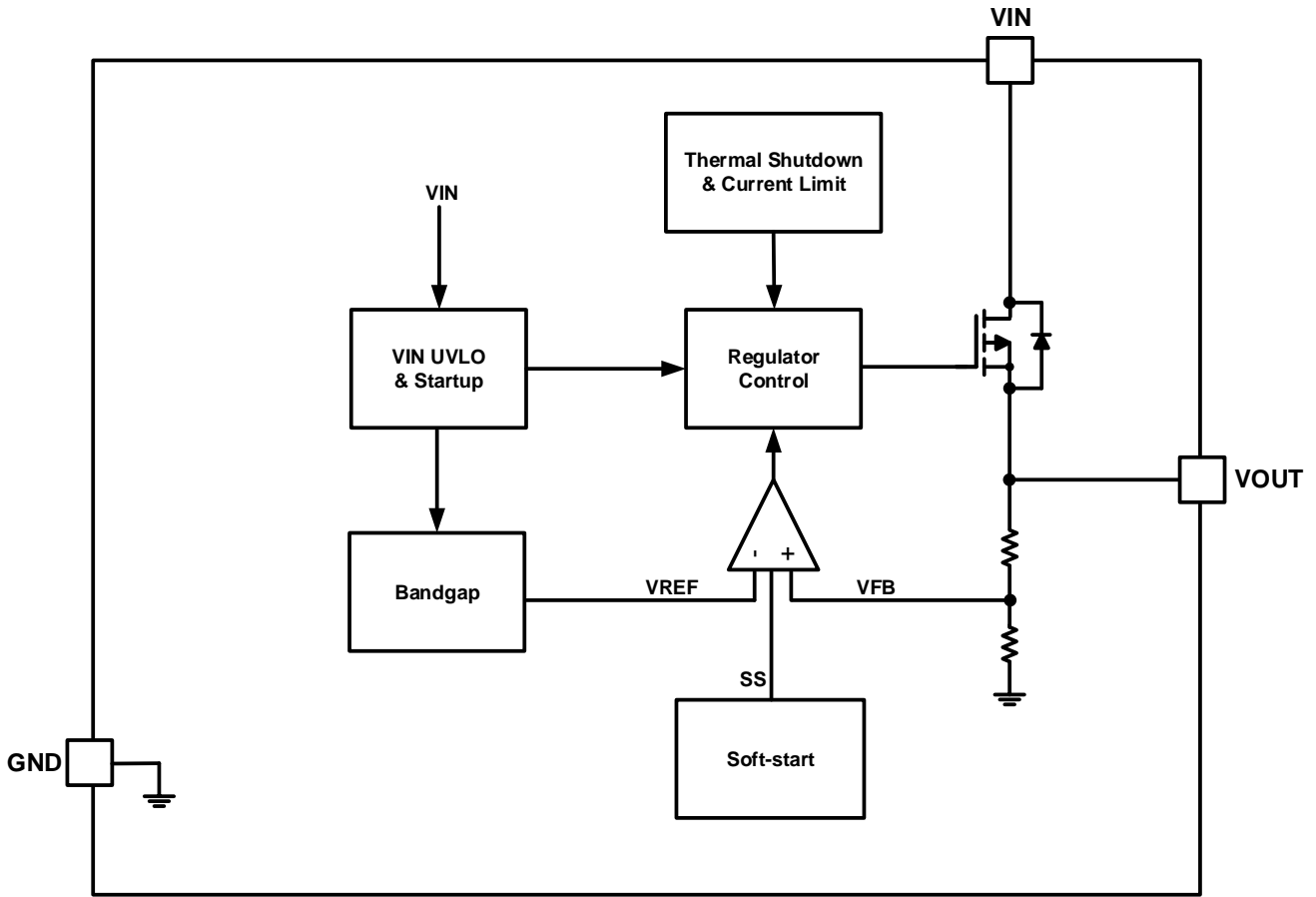


DBM DI B BD F D A A



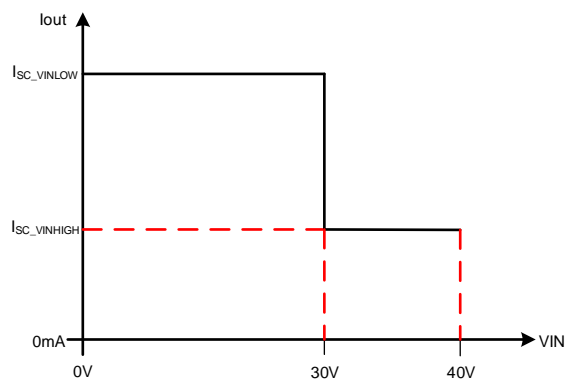
A

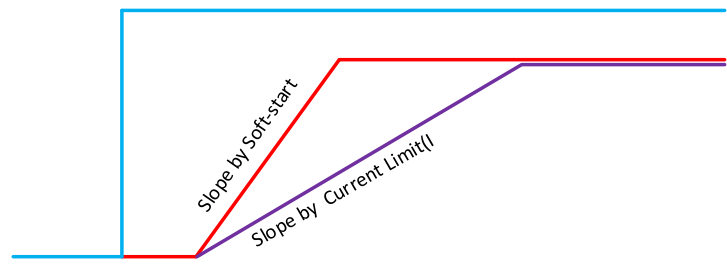
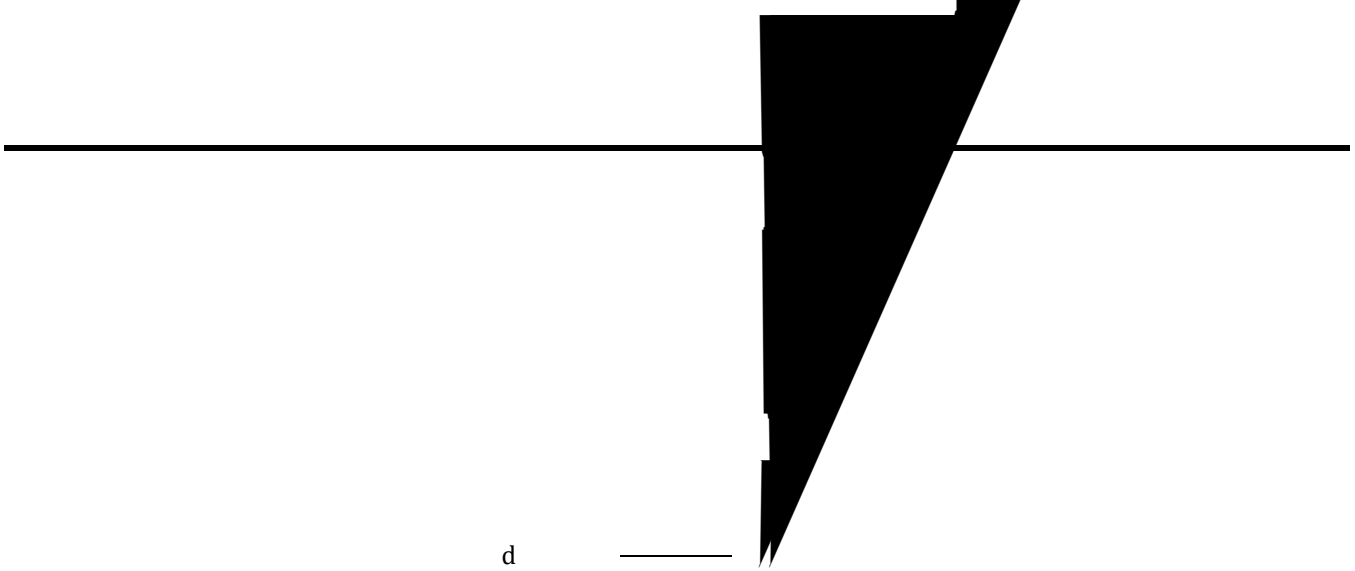
G OD POBMCMPDLÆ BH BNA



---

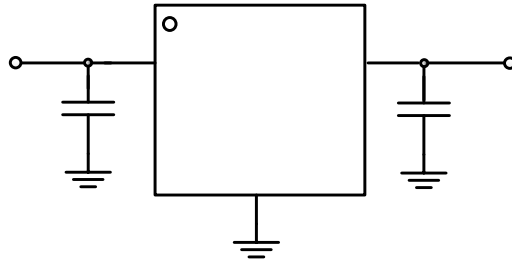
P F B POA

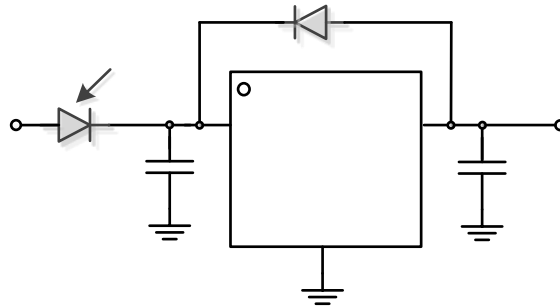




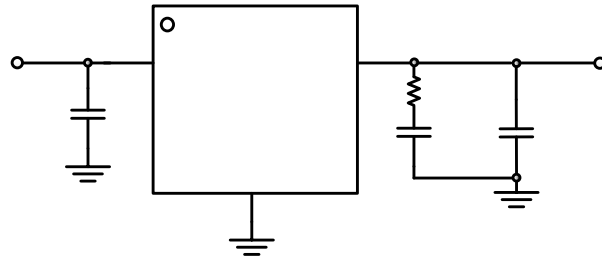
---

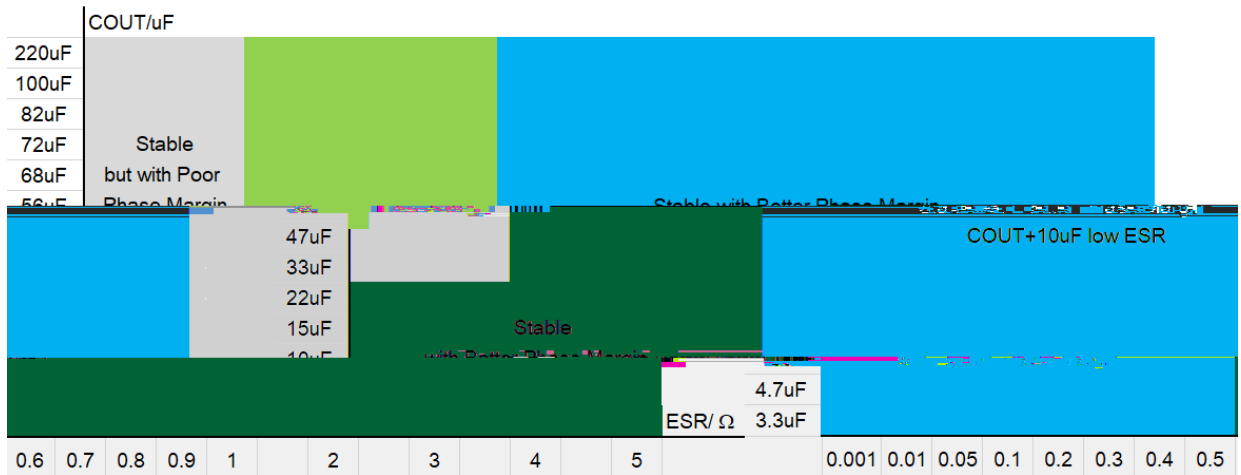
**B MDB POAGP NB POA**



---



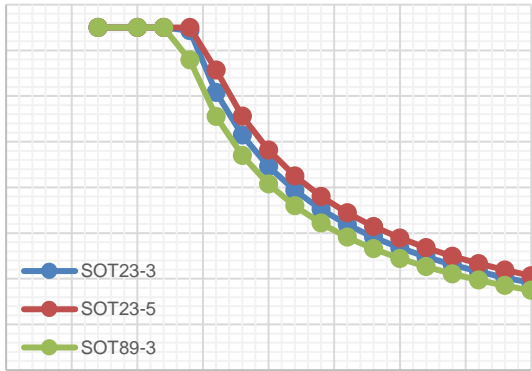
---

A A

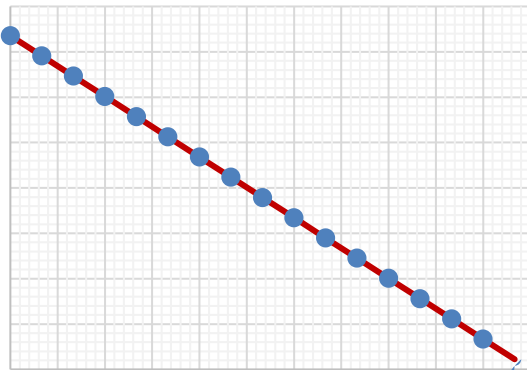
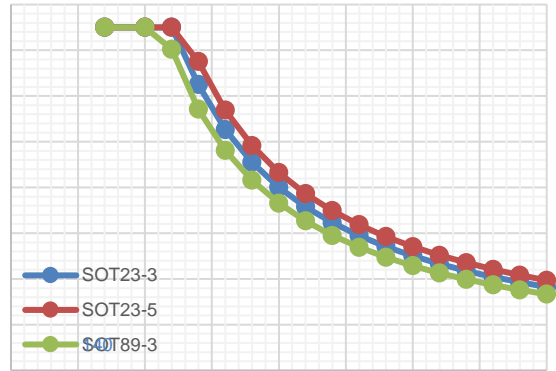
			°C



I F N B M D I B B D F D A



VIN/V

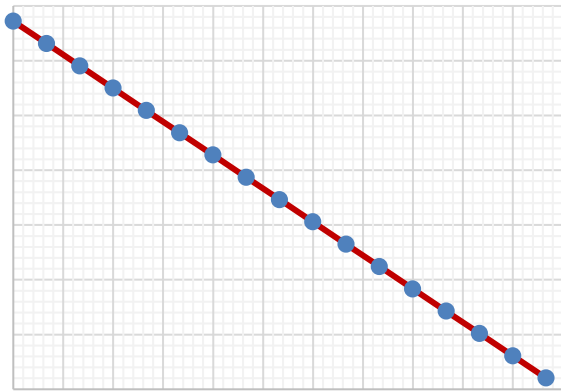


°C

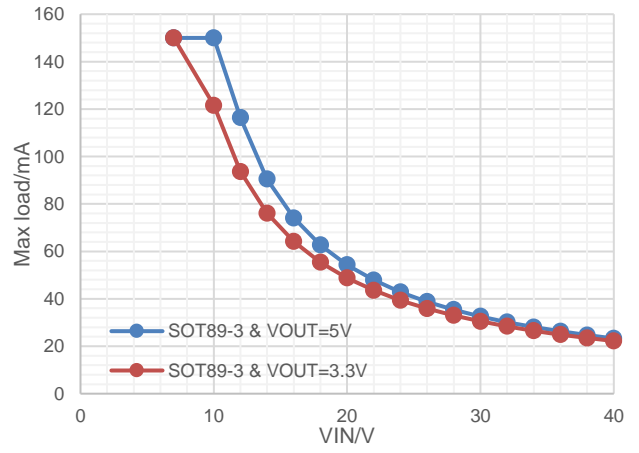
°C

°C

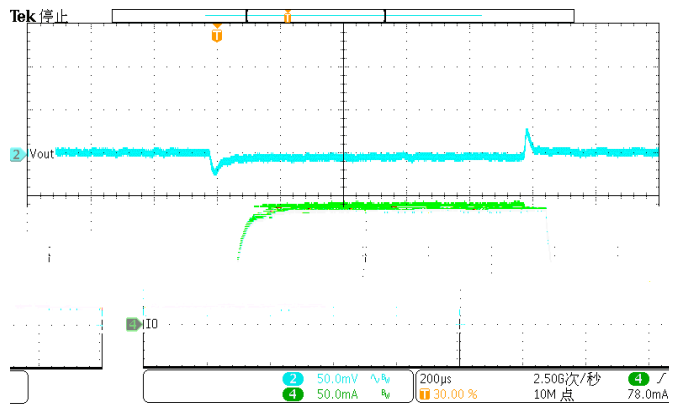
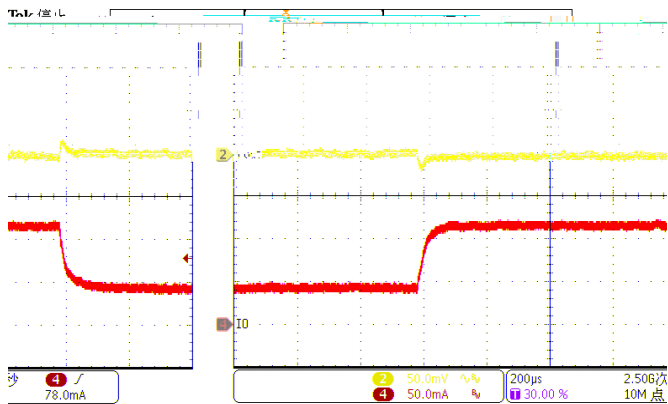
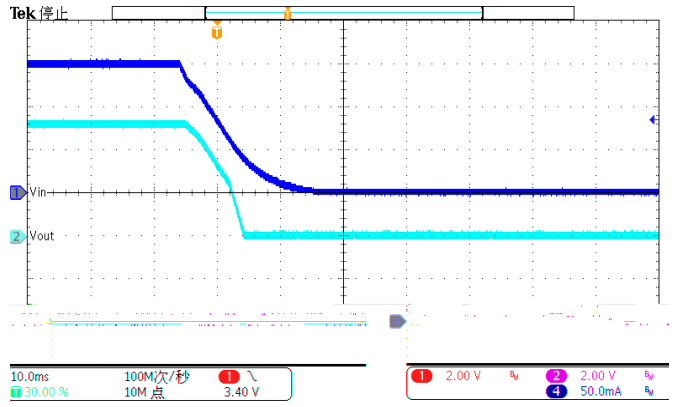
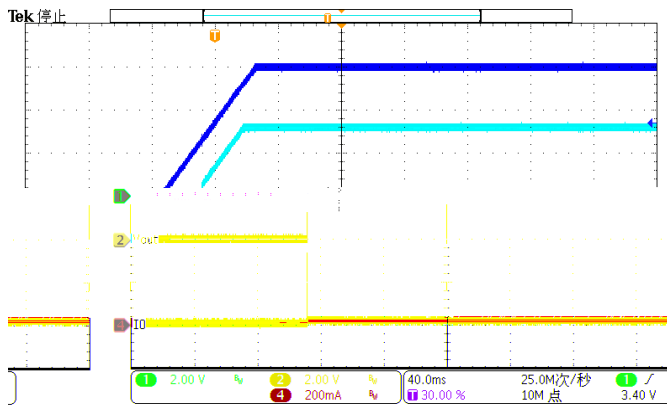
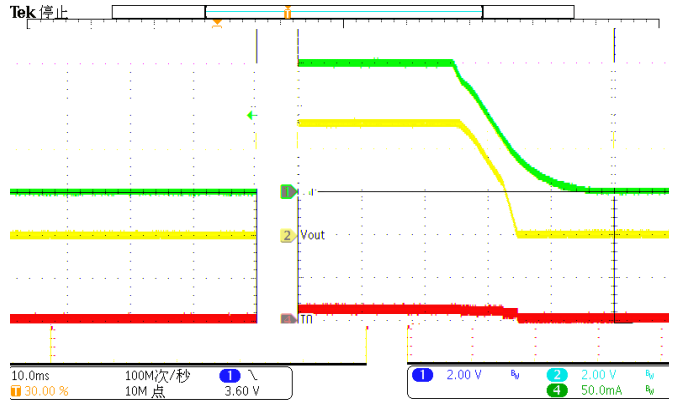
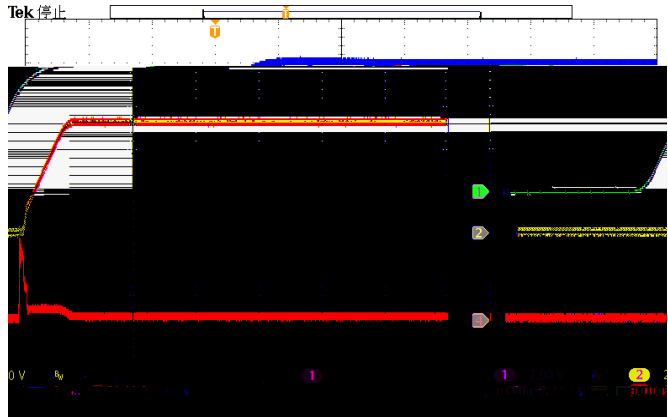
°C

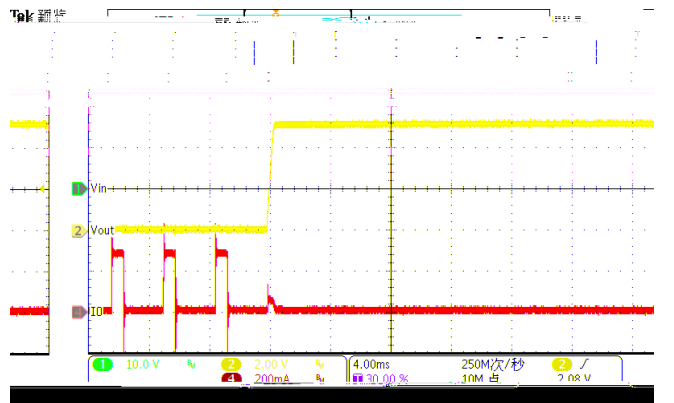
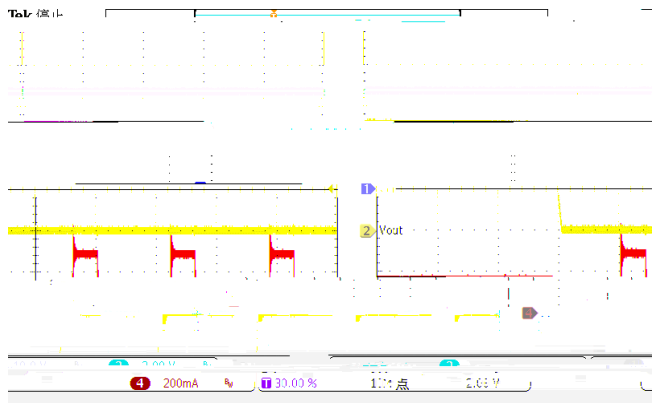
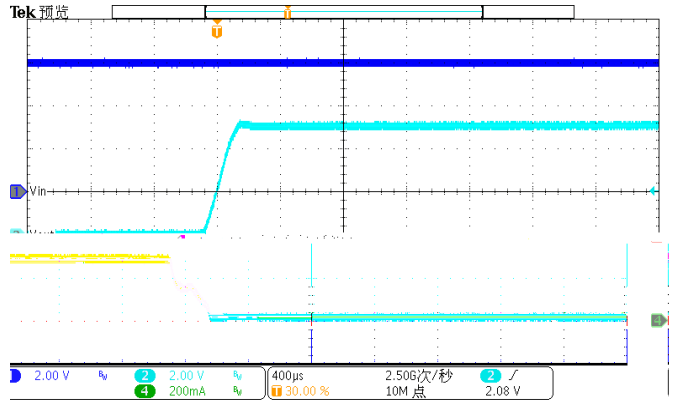
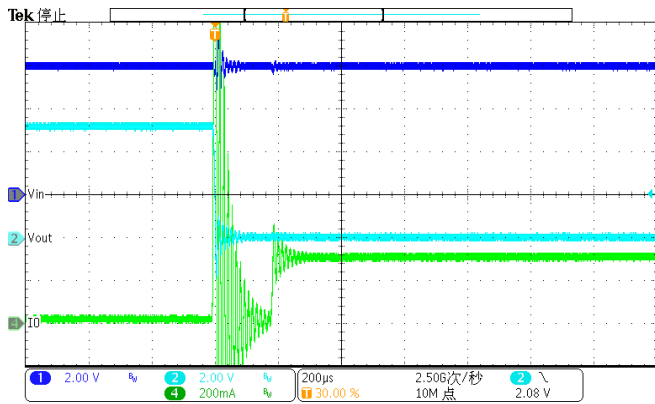
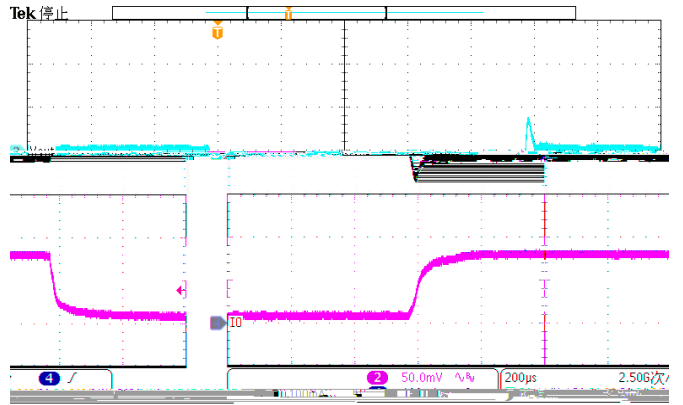
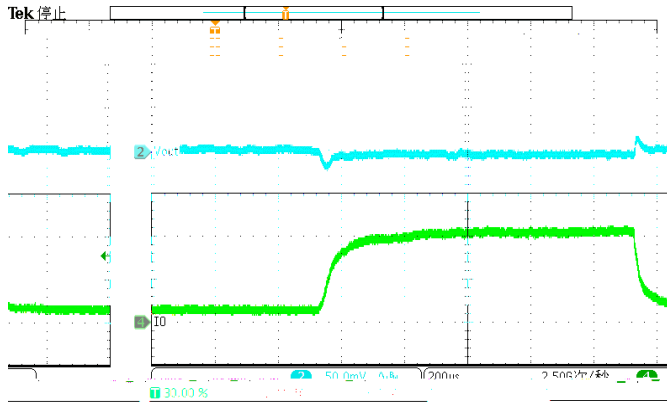


°C

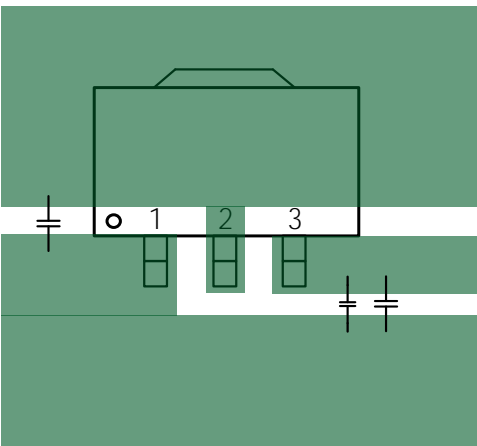
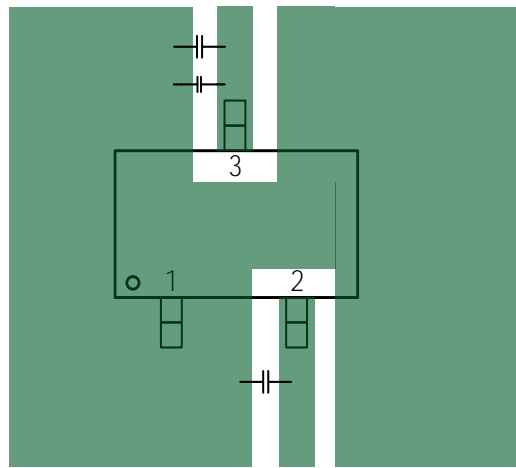
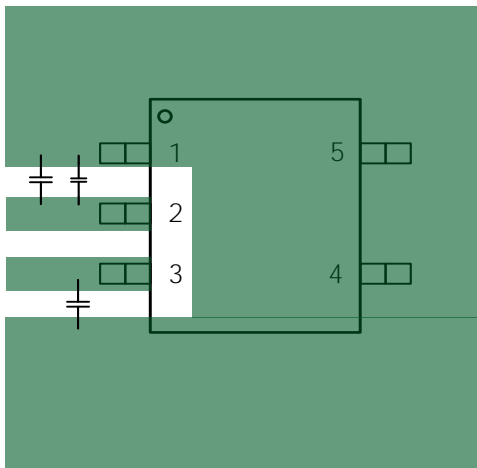


°C



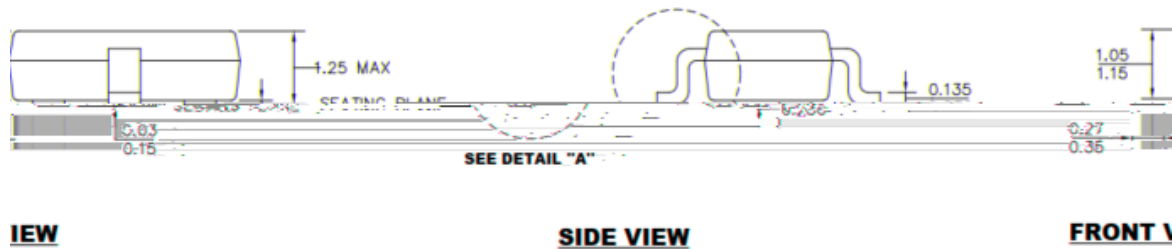
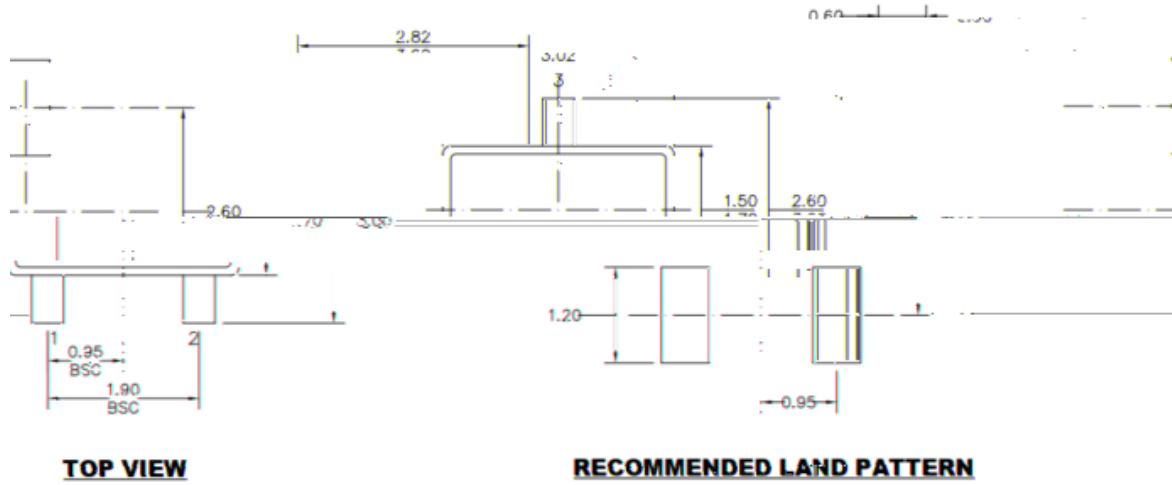


- 1.
- 2.
- 3.
- 4.
- 5.





**BDLBHFAOGP NB PO**



**NOTE:**

1) ALL DIMENSIONS ARE IN MILLIMETERS.  
 2) PACKAGE LENGTH DOES NOT INCLUDE MOLD FLASH, PROTRUSION OR GATE BURR.  
 3) PACKAGE WIDTH DOES NOT INCLUDE INTERLEAD FLASH OR PROTRUSION.  
 4) LEAD COPLANARITY (BOTTOM AFTER FORMING) SHALL BE 0.1 MILLIMETERS MAX.  
 5) DRAWING CONFORMS TO JEDEC VARIATION AA.  
 6) DRAWING IS NOT TO SCALE.

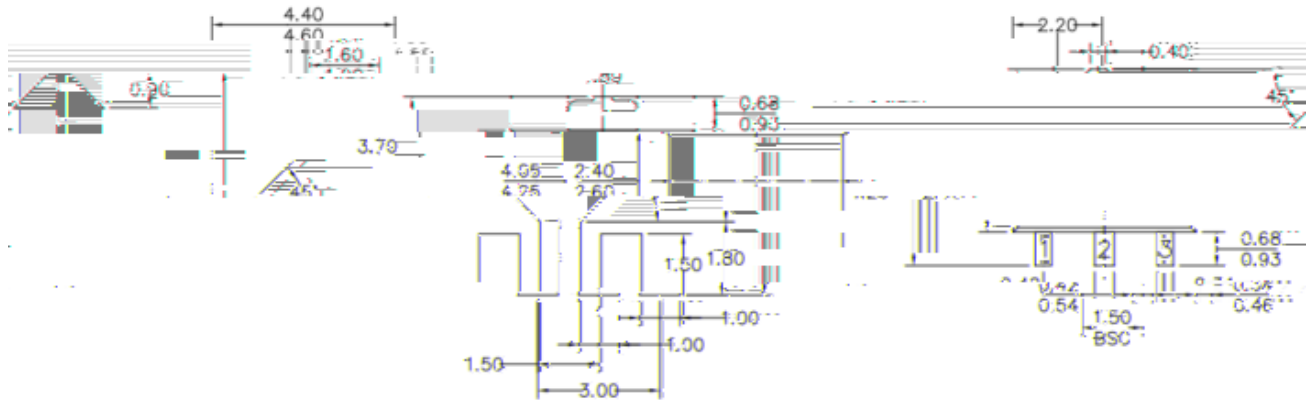
DEC:MO:193

**DETAIL A**

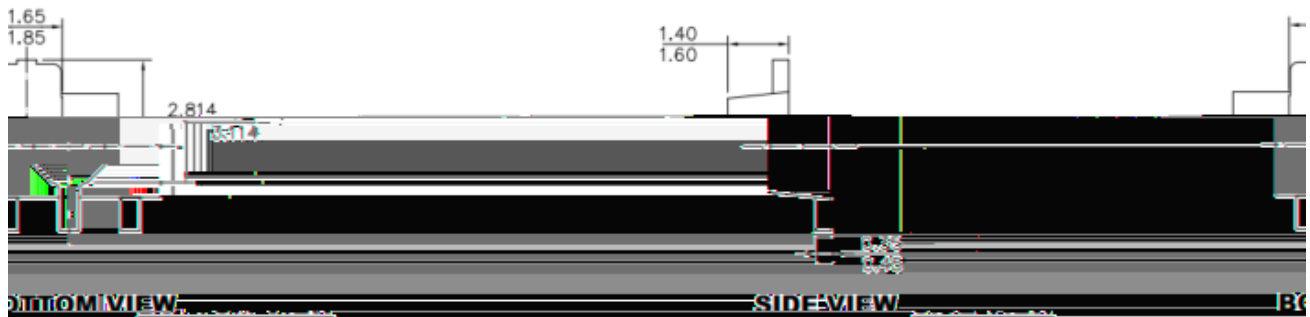
1.  
2.  
3.  
4.  
5.  
6.  
A

A

# BDLBHFAOGP NB PO



VIEW --- RECOMMENDED UNITS AND PATTERNS ---



**NOTE:**

- 1) ALL DIMENSIONS ARE IN MILLIMETERS
- 2) PREFERENTIAL REFERENCE IS TO P.A.
- 3) DRAWING IS NOT TO SCALE.

- 1.
- 2.
- 3.
- 4.
- 5.
- 6.

A

A

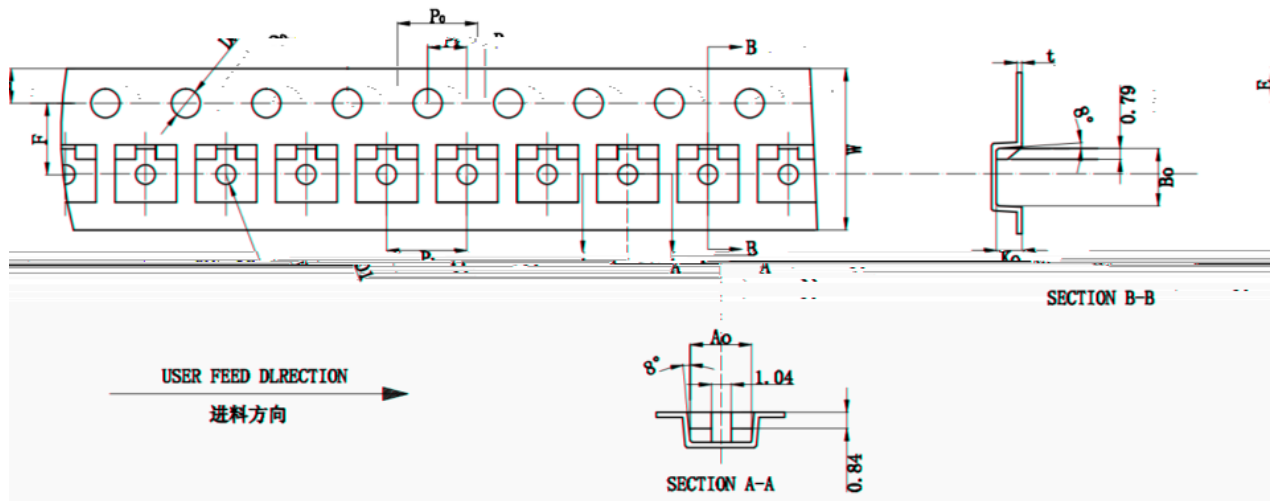


---

---

---

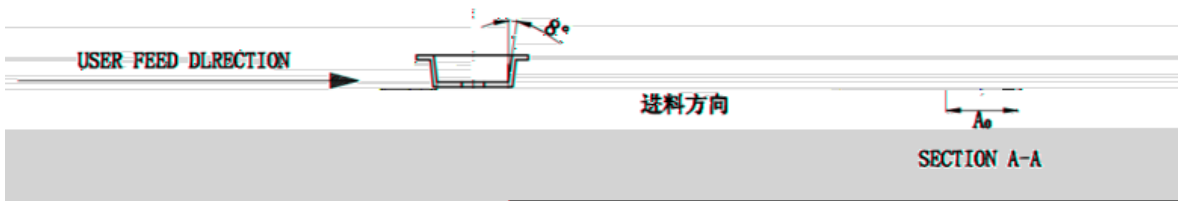
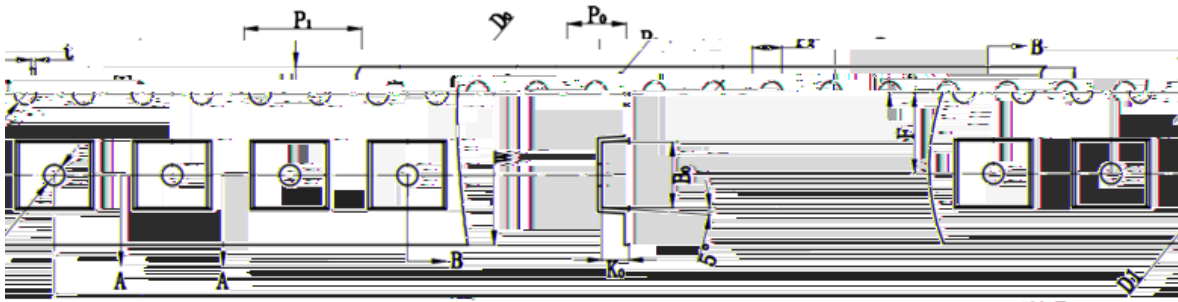
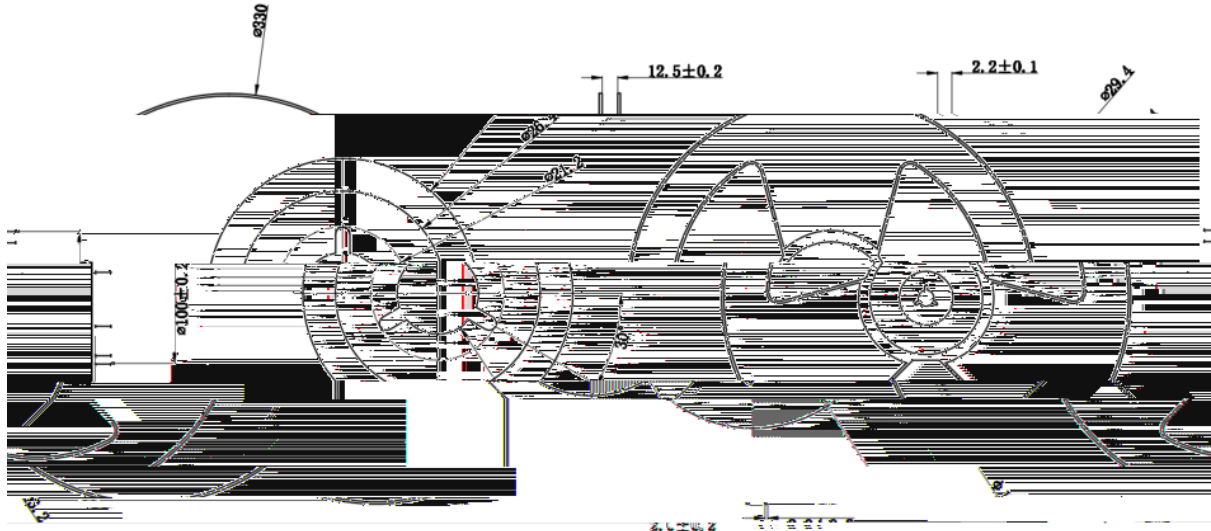
# B FBOEA FFMAOGP NB POA

ITEM	W	Ao	Bo	Ko	E	F	D1	Do	Po	P1	P2	t
MTN												

- 1、任意10个齿轮的累计误差不得超过±0.2mm  
 2、材料厚度以软件边缘测量为准  
 3、载带长度方向100mm距离的上平行度不得超过1mm，超过950mm不计累计误差  
 \*除非指明，公差范围为：±0.1mm  
 5、Ao、Bo为型腔内侧最底部向上0.3mm处测量为准，Ko为内部深度  
 6、型腔外形凡未标明处倒角R为0.2-0.3

B FBOEA FFMAOGP NB POA



ITEM	W	A <sub>0</sub>	B <sub>0</sub>	K <sub>0</sub>	E	F	D1	D <sub>0</sub>	P <sub>0</sub>	P <sub>1</sub>	P <sub>2</sub>	t

- 注:
- 任意10个齿轮的累计误差不得超过±0.2mm
  - 材料厚度以软件边缘测量为准;
  - 取带长度方向100mm距离的上下行或不
  - 超过1mm; 超过250mm不计算累计误差;
  - 除非指明, 公差范围为: ±0.1mm
  - A<sub>0</sub>、B<sub>0</sub>为型腔内侧最底部向上0.3mm处测量为准; K<sub>0</sub>为内部深度;
  - 型腔外形凡未标明处倒角R为0.2-0.3;