

---

## 4.5V-60V Vin, 5A, High Efficiency Step-down DCDC Converter with Adjustable Frequency

### FEATURES

- 
- 
- 
- 

60™-ñ ñ b#

€G V

# B 1540

## REVISION HISTORY

## DEVICE ORDER INFORMATION

O Q M L ADQ	O B J F D L Q J H M F	O B J F D C H B Q H O H M M
1)		

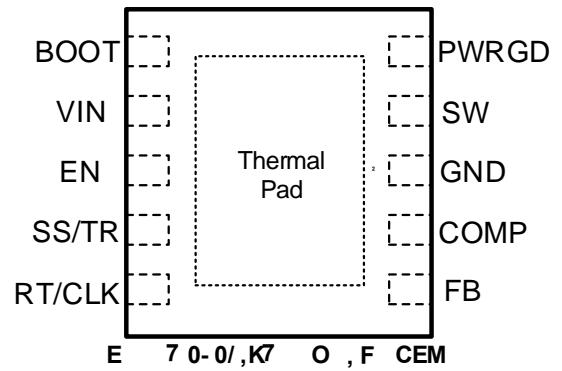
## ABSOLUTE MAXIMUM RATINGS

CD B Q H O H M M	L H M	L	M H

(1)

(2)

## PIN CONFIGURATION



## PIN FUNCTIONS

M L D	M N -	O H M E M B H M M


**RECOMMENDED OPERATING CONDITIONS**

O Q L D DQ	CDEMH HM M	L HM	L	MH

**ESD RATINGS**

O Q L D DQ	CDEMH HM M	L HM	L	MH

(1)  
(2)

**THERMAL INFORMATION**

O Q L D DQ	GDQL K L D QIB	CEM, 0/ K	MH

# B 1540

---

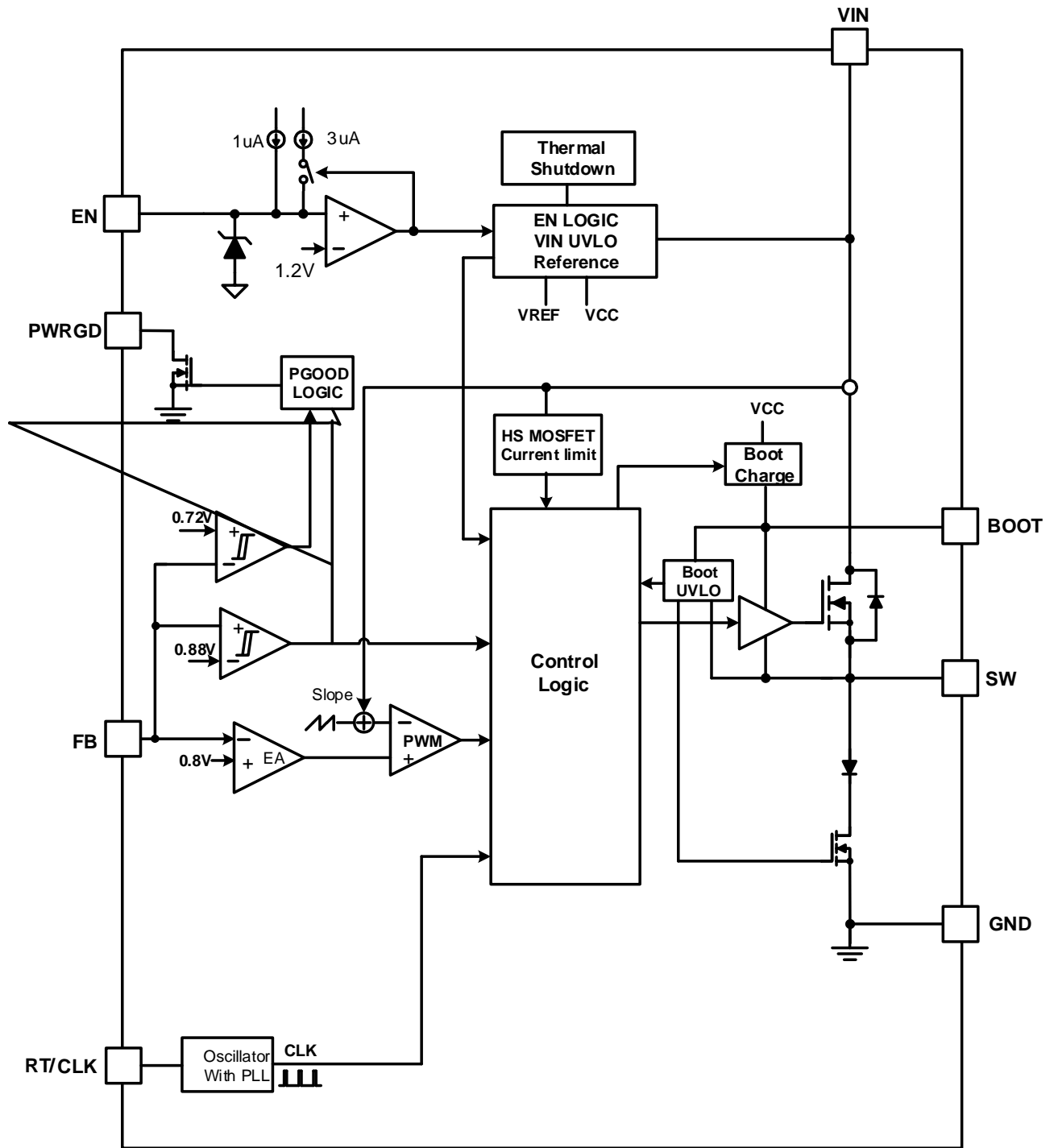
## ELECTRICAL CHARACTERISTICS

L ANK	O Q L D DQ	D BNMCH HM	L HM	O L	MH
O 7					
O 7 LN ED ,					
Q7 7 7 B F K					

**TYPICAL CHARACTERISTICS**

A large empty grid table with 10 columns and 20 rows, intended for recording typical characteristics.

FUNCTIONAL BLOCK DIAGRAM

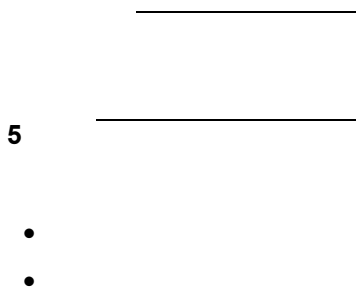


**OPERATION**

N 7 7

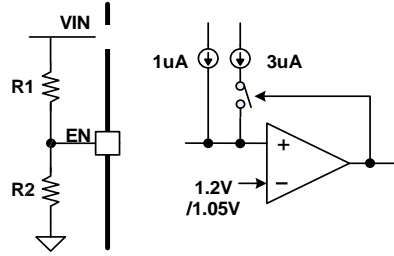
# B 1540

---



5

N F F F 7



±1%

•  
•

,F 7 E, F F

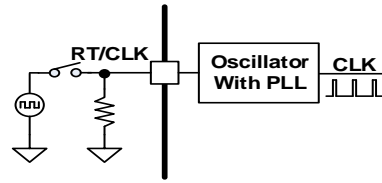
2 2

2 2

•  
•

F E7 7 B F





5

A F, F F 7 Q7 F K C , FN 7 F

N 7 B 7 FK F

\_\_\_\_\_

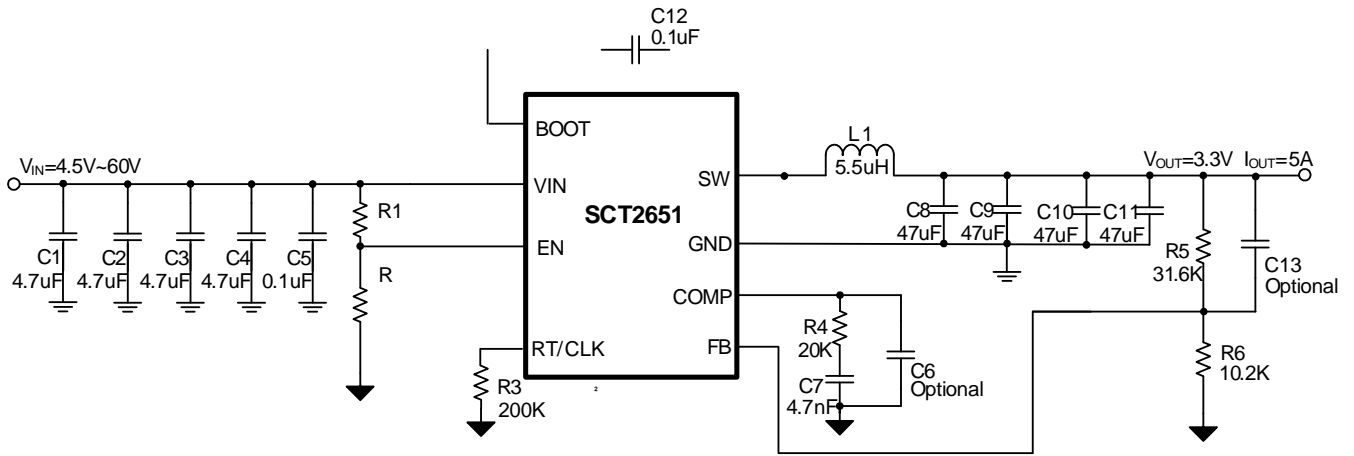
N 7 F 7 O 7 F

O 7 F O QFCO (

7 F "

APPLICATION INFORMATION

F



E 7 00- B 1540 C7, D( 7 2-2 N F F F O 7 KN

C7, O 7F ,

C7, O 7F ,	D( 7 7

# B 1540

---

N F F F 7

N	Q <sub>4</sub>	Q <sub>5</sub>

—

•

H F 77 F

\_\_\_\_\_

- 
- 
- 
- 
- 

\_\_\_\_\_

- 
- 
- 
- 
- 
- 

\_\_\_\_\_

- 
- 
- 
-

**B 1540**

---

C 7 77 F

\_\_\_\_\_

A F F B F 77 F

N F FB F 77 F

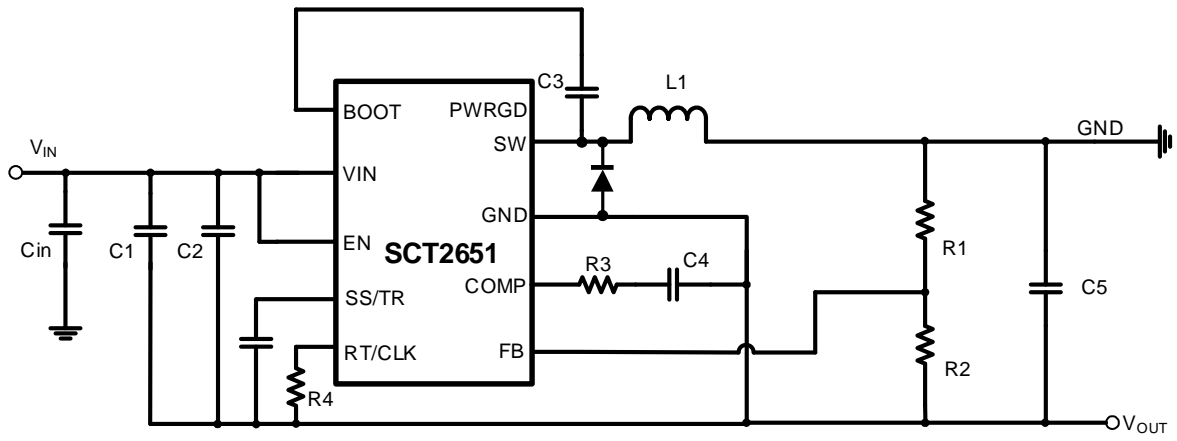




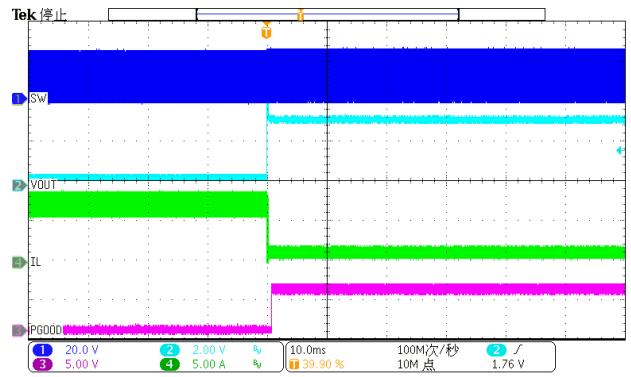
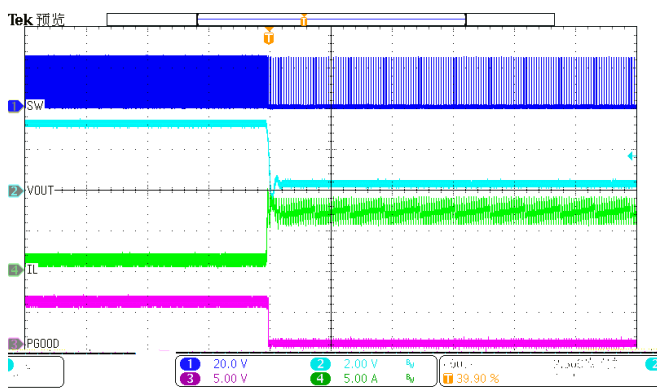
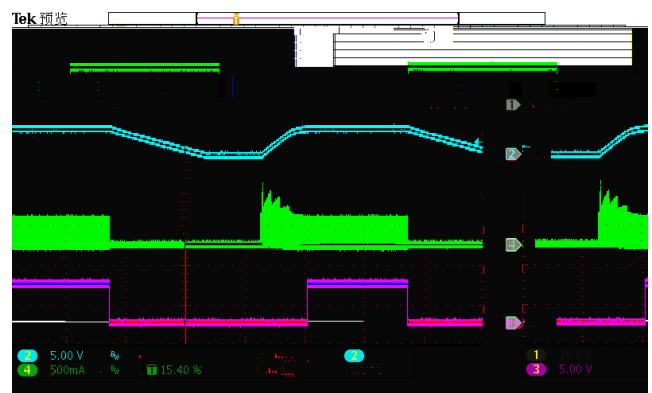
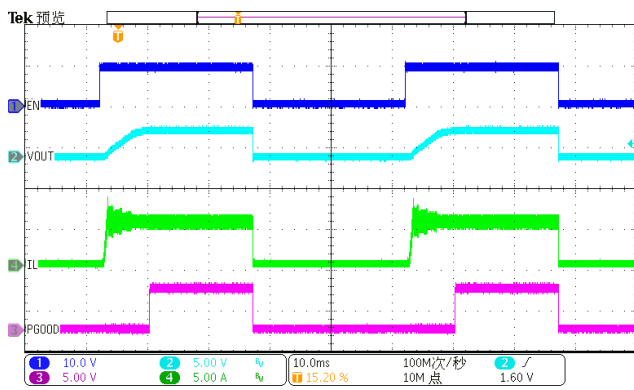
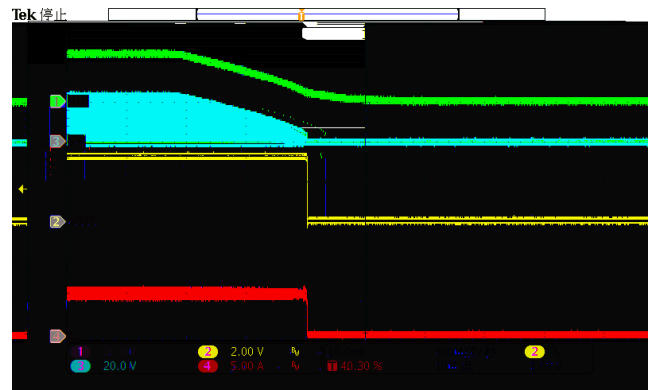
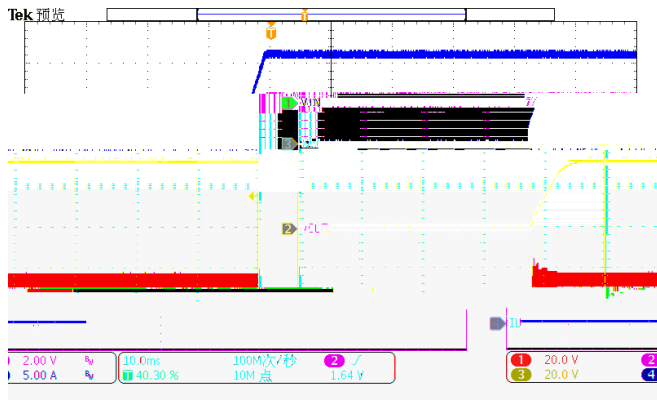


# B 1540

H 7 F O 7 F

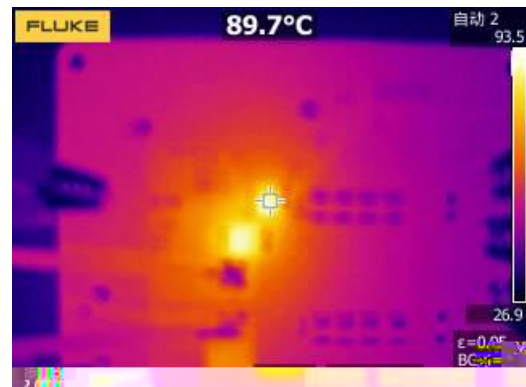
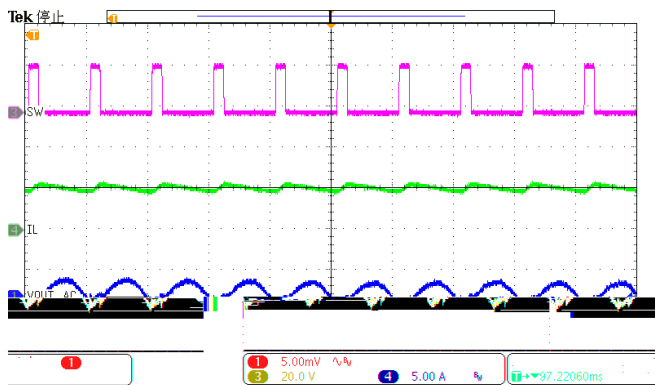
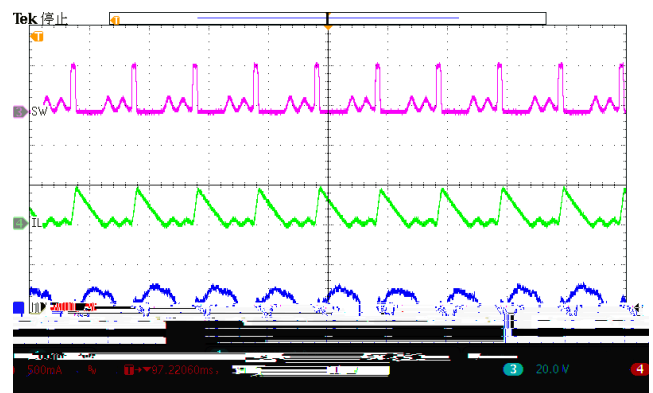
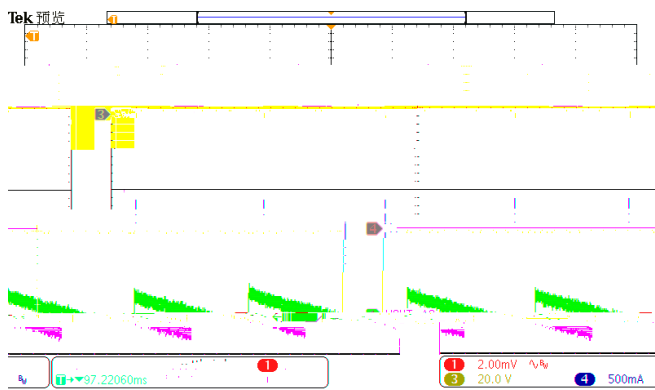
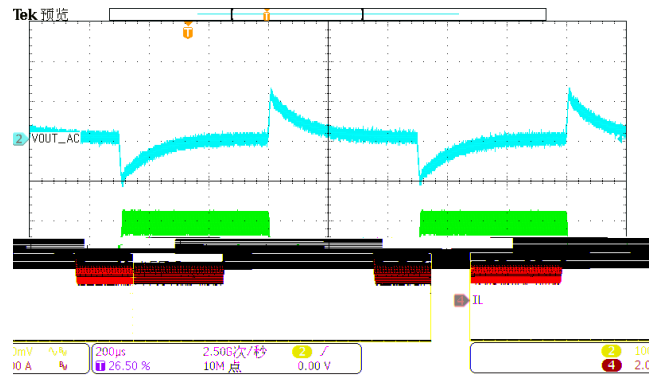
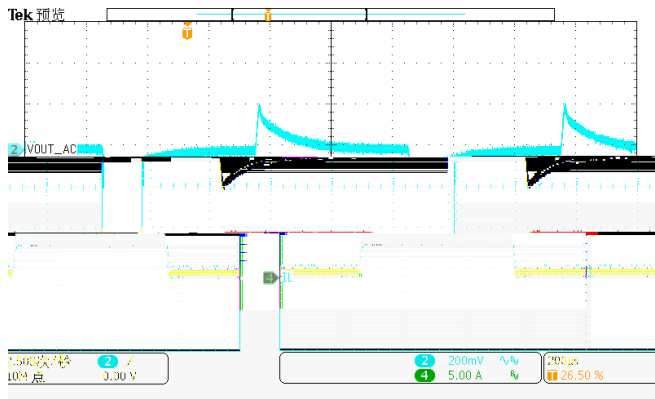


F 7 ,



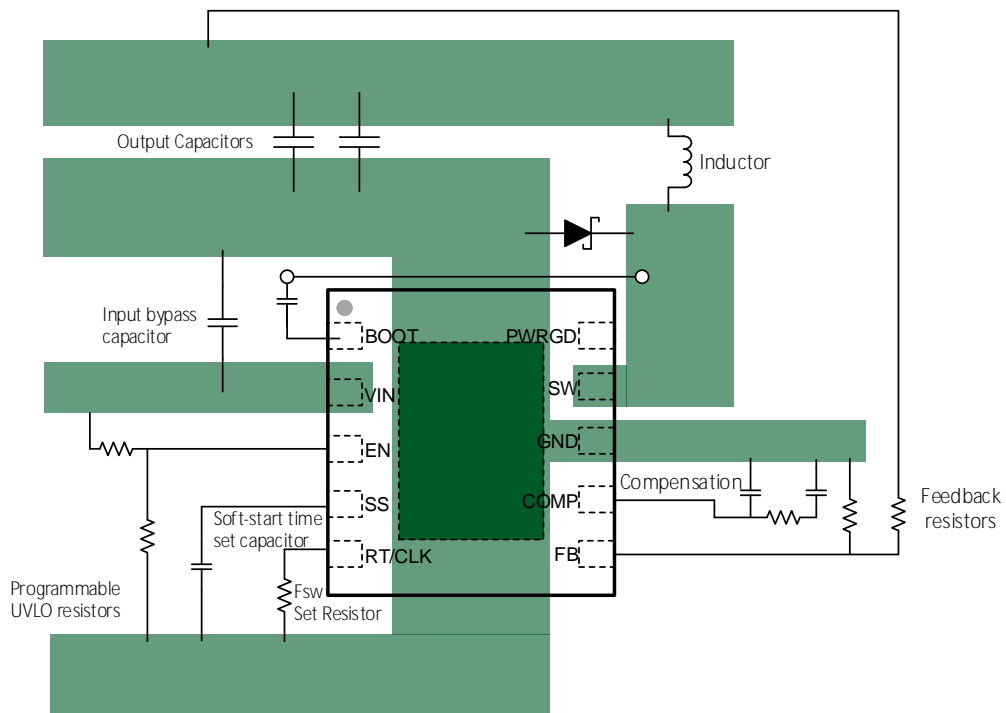
# B 1540

F 7 , F 7 (



K FF 7 7

- 1.
- 2.
- 3.
- 4.
- 5.
- 6.
- 7.
- 8.
- 9.
- 10.



**B 1540**

---

**PACKAGE INFORMATION**

TAPE AND REEL INFORMATION