



## REVISION HISTORY

89 / : KQOX\_WLO PY ZO SY\_ O SSX WKc NPO PYW ZKQOX\_WLO SK ROM\_ OX O SX  
 O SSX : YN\_MSX  
 O SSX ZNK O O S\_ O OWY ODOXO NSNO

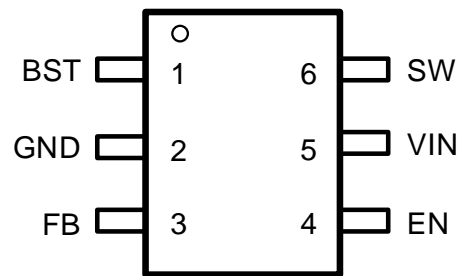
## DEVICE ORDER INFORMATION

=-		=9 6
1) 0Y KZO COV+NN= <del>FB</del> OQ =-		

## ABSOLUTE MAXIMUM RATINGS

9 O YZOK SQPOOKS OWZOK O X0 YROa SO XY ON			
3 / 8			

## PIN CONFIGURATION



## RECOMMENDED OPERATING CONDITIONS

9 0 YZOK SQPOOKS OWZOK\_ O KXQO\_X0 YROaSOXYCN

3	3Z_ YKQO KXQO			
9	9_Z_ YKQO KXQO			
4	9 ZOK SQT_XMSX OWZOK_ O			-

## ESD RATINGS

/ =.	2_WKX, YNc 7 YNOV2, 7 ZO +8=34/ . / - 4= ZOMBSK SX KWZSK			U
	- RK QCN. O \$D7 YNOV- . 7 ZO +8=34/ . / - 4= ZOMBSK SX KWZSK			U

(1) 4/ . / - NYM\_WOX 4/: K O RK 2, 7 KWa KFO WKX\_RRM\_ SQa SRK KXNK N / =. MYX YVZ YMD

# ELECTRICAL CHARACTERISTICS

$\mathbb{B}$ 4 - h - cZ\$KVKVOS O CN_XNO -			
$\mathbb{B}$	9 ZOK \$Q\$K_ YKQO		
$\mathbb{B}1$ 69	\$KZ_ 69 R O RYW 2c O O S	$\mathbb{B}$ \$S\$Q	W
$\mathbb{B}2.8$	=R_NYa XM_ OX PYW $\mathbb{B}$ Z\$K	/ 8 XYWK	+
3	_ \$D MDX M_ OX PYW $\mathbb{B}$ Z\$K	/ 8 PYK \$K XY WK XYX a \$VRSQ	+
. =981 2	2 \$R \$O 7 9 = 0 / YX O S KXMD	, 99 =A	W
/ 0	OPD OXMD YKQO YP0,		
$\mathbb{B}3$ 1 2 =	2 \$R \$O ZYa O 7 9 = 0 / ZOKU M OX \$VS R O RYW		+
/ 81 2	/ XKL \$R R O RYW		
/ 81 6	/ XKL \$Ya R O RYW		
/ 81 2C =	/ XKL \$ R O RYW R_ O O S		W
$\mathbb{B}3$ 81 6	/ XKL \$Z\$K Z_W_ZM_ OX	/ 8	+
$\mathbb{B}3$ 81 2	/ XKL \$Z\$K Z_W_ZM_ OX	/ 8	_ +
==	= YP K \$VO		W
0=A	= a \$VRSQPO _ OXMD		7 2 d
981 7 \$\mathbb{B}\$	7 \$SV_WYX \$VO	$\mathbb{B}$	X
9 :	00CNLKMU Y O YKQO a SR O ZOM Y OPD OXMD YKQO	0, / 0 \$S\$Q 0, / 0 \$K\$Q	
, 99	, 99 =A 69 R O RYW	, 99 =A \$K\$Q 2c O O S	W
=.	RO WKV R_NYa X R O RYW	4 \$S\$Q 2c O O S	- -

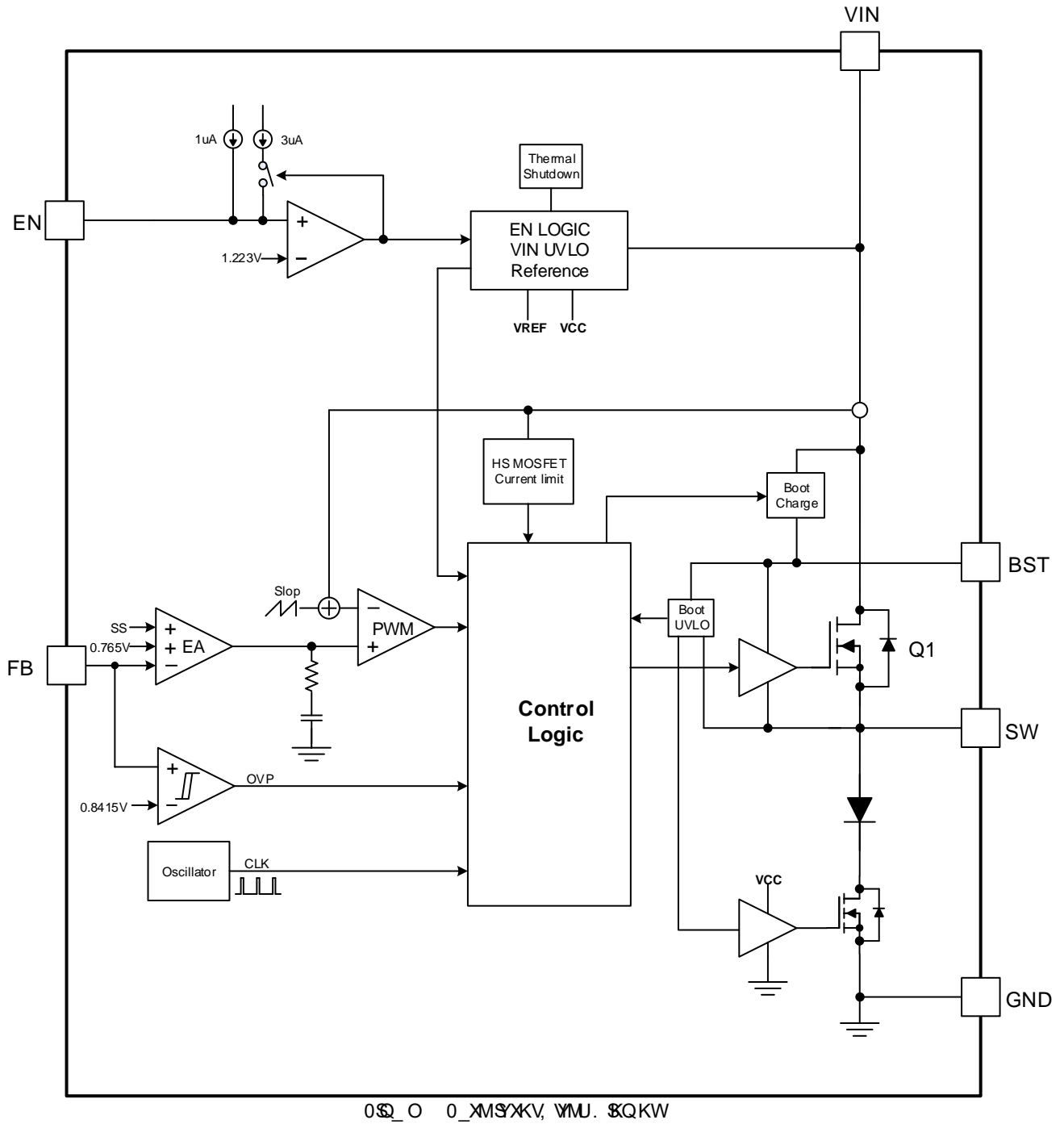
. O S C N P Y W L O X M R M K K M O \$ K \$ Y X

---

## TYPICAL CHARACTERISTICS

0S\_0 / PNDM 6YKN- \_ OX Y\_

# FUNCTIONAL BLOCK DIAGRAM



OPERATION

RO=- S K SZ\_ + Y\_Z\_ L\_MJ MX O O a SR SKQK ON W N YX RSR \$IO ZYa O  
79=0/ 3 SVZOWOX MX KX PO\_OXMt ZCKU M\_ OX WNO MX YV Y CQ\_K O Y\_Z\_ YKQO ZY \$ISQ  
CbMDVX VOKXN VKN KX SX O ZYX O

RO =- FCK\_O FBCN 72d a SVRSQ PO\_OXMt a RSR WSKVSO RO Ob OXKV YP MRZ ZK SO  
MMWZYXOX \$IOKXN ON\_MD ROY\_Z\_ SZV RO=- FCK\_O KXSK OXKV W YP K \$WO YK Y \$IK QO  
SK\_RM\_ OX KXN Y\_Z\_ YKQO Y O RYY N\_SQ K\_Z RONO \$DKVY\_ZZY WYXYVSM K\_Z a SRZO  
L\$ ON Y\_Z\_ MYN\$SX RO CKWØ WNO KX \$SX LOa COX: A 7 WNO KXN: =7 WNO YZOK \$X OX\_ O  
RSR O P\$IXM Y O a \$IO VKNM\_ OX KXQO RO \_S MDX M\_ OX S c \$SKW\_ + \_XNO XY VKN Y VOZ WNO  
MYN\$SX YKMRØ ORSR O P\$IXM K VSR VKN

RO=- RK KNOK\_VSZ\_ K\_Z YKQO YP a SR W R c O O S RO/8 ZSKSKRSR YKQO ZSK  
a SRK Z OMSX RO RY W RK MXLO\_ ON YKNT\_ RO SZ\_ YKQO VMUY\_ RO RY W a SR a Y Ob OXKVO S Y  
Y WOO KMM\_ KORSR 69 c OW O\_SOWOX OVK SQ/8 ZSK OXKLØ RONO \$O a SR RO SK OXKVZ\_W\_Z  
M\_ OX Y RO ZSK - YXCM\$Q/8 ZSK Y B NSCMØ K\_Z RONO \$DK\_YWK \$KW

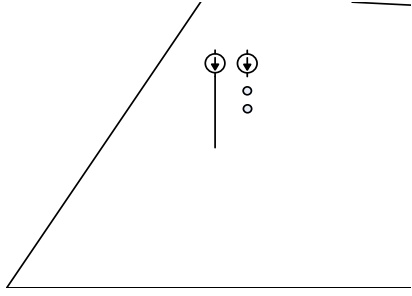
RO=- P\_WZ Y OMSX FCK\_O \$WNO RO SZ\_ XNO YKQO VMUY\_ ROY\_Z\_ Y O YKQO Z Y OMSX  
Y O M\_ OX Z Y OMSX a SR MØ Lc MØ M\_ OX VSSQ Y\_Z\_ FK N RY\_Z Y OMSX KXN RO WKV R\_N a X  
ZY OMSX

RO =- OWZYc FBCN PO\_OXMt ZCKU M\_ OX WNO MX YV + X SK OXKVMYMU \$SK O \_XSQ YX RO  
SKQK ON RSR \$IOZYa O 79=0/ SKCMRMØ ROXSN\_MY M\_ OX SO \$CK v A ROX ROM\_ OX RY GR  
RSR \$IO79=0/ CKMRO RO RO RY W Ø OV O Lc RO- 97: YKQO YP RO SK OXKVO Y KWZVØ RO SKQK ON  
RSR \$IO79=0/ S \_XCN YP

ROO Y KWZVØ O O RO- 97: XYNOLc MWZK SQ RO YKQO YP ROØ, ZSK a SRKXSK OXKV OPO OXMØ  
YKQO A ROX RO VKNM\_ OX SMCK O K ON\_M\$XSK RO PØNLKMU YKQO OK SO Y RO OPO OXMØ KSO - 97:  
YKQO \$V/ROK OKQO SN\_MY M\_ OX WKMRØ RO SMCK ON VKNM\_ OX RS PØNLKMU VYZ a OW OQ\_K O RO  
Y\_Z\_ YKQO Y RO OPO OXMØ XM 7:  
RK WYXH MSV YX a ROXN\_Sc OXMØ RKX PY K FBCN PO\_OXMt ZCKUM\_ OX WNO MX YV

RO=- YZOK O SK: \_VO=USZSQ7 YNO VSR VKNM\_ OX SVZ Y O O P\$IXM FBCN A ROX RO VKN  
M\_ OX NØCK O KX \$MOWOX SK RO PØNLKMU YKQO VKN





aROO

- so S SSQ R O RY W YP SK 69
- RW S RWQ R O RY W YP SK 69

OS\_O =c OW 69 Lc OXKLVNS\$IO

RO =- CQ K O RO SK O XKV OPOXMD YKQO K aSR ±2.5 YOKXMD Y O RO YZOK SK  
 OWZOK OKXN YKQO KXCO ROY\_Z\_ YKQOS O Lc K O S Y NS\$IO PYW ROY\_Z\_ XYN O Y RO0, ZSK 3  
 S OMMWONON Y\_O YOKXMD Y LO O O S Y O/ K SX YMKW KO O SKXMD Y P O S Y NS\$IO  
 Y SVZ Y O O P S O M K V SR VKN KCO KVO O S Y KO OMMWONON 2Ya O O \$ RO KVO KO Y Y RSR  
 RO CQ KY a SLOWYO \_ MZ \$ O Y XYSOK PMSQY\_Z\_ YKQOKM KM

aROO

- 0,1 9: S RO O S Y MYXCMSQ ROY\_Z\_ Y RO0, ZSK
- 0,1,9 S RO O S Y MYXCMSQ RO0, ZSK Y ROQY\_XN

RO =- SKQKO KXSKO XKV YP K M M S RK KWZ RO OPOXMD YKQOPYW dOY YV Y  
 OPOXMD YKQOSK W \$ PRO/8 ZXS Z\_VNLOWa a SRSQ YZ KN ROSKO XKV YP K O O  
 RO YP K K V Y O O N\_SQ R\_NYa XN\_O Y RO WKV O VKN SQ

+ XOb OXVLYY KZMKZMSY LOa OOX, 99 ZSKKN=A ZSKZYaO ROPYK SQQK ON SO YRSR \$IOZYaO  
 79=0/ ROLYY KZMKZMSY YKQOS MRK QONPYWKX SKQK ON YKQO CQ KY a ROXRSR \$IOZYaO  
 79=0/ S YPKXN ROOb OXVYa \$IONSNOMYXN\_M RO OMMWONON KVO YP RO, 99 MKZMSY S  
 0

RO 69 YRSR \$IO79=0/ QKONSO RK SSQ R O RY W YP KXN R O O S YP W A ROX RO  
 NO \$D YZOK O aSR RSR N\_c M M O Y Ob OMO \$ SR VKN LYY KZ MKZMSY WKc LO XY OMRK QON SK  
 MYX \$OKL V VYX SWO RO YKQOK LYY KZMKZMSY S SK P S OX YN SORSR \$IO79=0/ P W YX A ROX  
 RO YKQOKMY LYY KZMKZMSY NYZ LOWa , 99 69 YMM RO S M X O O PYMD \_ XSQ YSKX  
 SKQK ON Va \$IO79=0/ ZO SNSK W Y O P O R RO YKQO PLYY KZMKZMSY YQ\_K KXCO ROMYX O O  
 YZOK SXY O Ka \$ION\_c KXCO

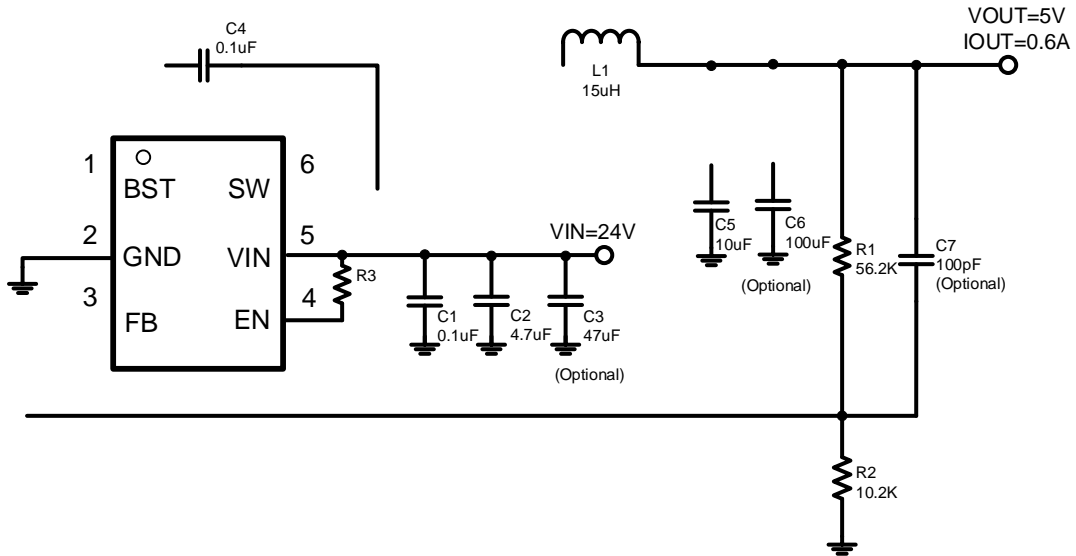
. \_ SQ ROMYXNSY YP\_VK Va YKQON OPOXMDPYW ROSZ\_ Y ROY\_Z\_ =- YZOK O SK6Ya . YZ







# APPLICATION INFORMATION



0 0 \_ O = - . O SX / bKWZ 9 \_ Z \_ a SR: YQKWWKL 69

3Z_ YKQD	8 Y WKV
9 _ Z _ YKQD	
7 kbSV W9 _ Z _ - _ OX	+
=a SMRSQ 0 O _ OX	7 2d
9 _ Z _ YKQD SZ 0 ZOKU Y ZOKU	W
KX SX O ZYX O + Y + WKN OZ	Y_ W
= K 3Z_ YKQD SSQ 3	
= YZ 3Z_ YKQD FK 3Q 3	

ROY\_Z\_ YKQOS O Lc KXOb OXKVO S Y NS\$IO  
KXN SX cZ\$KV KZZ\$K SX MROWK \$I  
QVYVWONON O SKXMS 5 OO\_K SX  
YMKW\_K O

	5	5
	5	5

a ROO

- /0 S ROPONLKMJ OP OXMD YKQO cZ\$KV

A RO O

- 67 ~~3~~ S RO W~~S~~SV\_W~~S~~N\_MKXMD O \_SCN
- Pa S RO a~~S~~RSQPO\_O~~X~~Mt
- 9 S RO Y\_Z\_ YKQO
- ~~3~~ Wkb S RO Wkb~~S~~V\_W~~S~~Z\_ YKQO
- ~~3~~ Wkb S RO Wkb~~S~~V\_W. - VKNM\_ OX
- 63 S MYO~~P~~MDX YP~~3~~: Y~~3~~

RO YKWM\_ OX P~~V~~a~~S~~Q R Y\_Q~~R~~ RO ~~S~~N\_MY S RO ~~S~~N\_MY ~~S~~Z~~V~~O\_M\_ OX ZV\_ RO Y\_Z\_ M\_ OX A RO X O~~V~~MSQ  
 KX ~~S~~N\_MY MRY~~O~~S K ONM\_ OX O Z~~V~~MB~~V~~ RO K\_ K~~S~~X\_M\_ OX ~~V~~K GO RKX S Z~~V~~KU YZOK~~S~~X\_M\_ OX KXN  
 7 = M\_ OX K V Y XY LO ~~C~~MONON RO ~~C~~PY O RO Z~~V~~KU a ~~S~~RSQ\_M\_ OX YP ~~S~~N\_MY ~~3~~: /+5 KXN ~~3~~ 7 = MKX LO  
 MKW~~V~~K ONK ~~S~~K O\_ K~~S~~X KXN O\_ K~~S~~X

A RO O

- ~~3~~: /+5 S RO ~~S~~N\_MY ZCKUM\_ OX
- ~~3~~ S RO. - VKNM\_ OX
- ~~3~~: S RO ~~S~~N\_MY ZCKU Y ZCKUM\_ OX
- ~~3~~ 7 = S RO ~~S~~N\_MY 7 = M\_ OX

3XY O VKN~~S~~QY VKN KX ~~S~~X MYN~~S~~SX RO ~~S~~N\_MY ZCKUM\_ OX MKX~~S~~MCCK O\_Z Y RO a ~~S~~VRM\_ OX ~~V~~VS YP  
 RONO ~~S~~Da~~R~~RS cZ~~S~~K~~V~~ + ROWY MYX O K SOKZZ YKMS YMRYY OKX~~S~~N\_MY a ~~S~~RK K\_ K~~S~~X\_M\_ OX  
 K~~S~~Q QCK O RKX + , ~~C~~MK\_ O YP RO Wkb~~S~~V\_W ~~3~~: /+5 ~~V~~VSON Lc NO ~~S~~D RO Wkb~~S~~V\_W Y\_Z\_ M\_ OX RK RO  
 =- MKXNO~~S~~O K V Y NOZOXN YX RO ~~S~~N\_MY M\_ OX ~~S~~Z~~V~~ R\_ RO Wkb~~S~~V\_W NO ~~S~~ON Y\_Z\_ M\_ OX K V Y  
 K~~P~~OM RO O~~V~~MS~~X~~YPS~~N~~MKXMD RO Wkb~~S~~V\_W ~~S~~N\_MY O\_V ~~S~~K~~V~~ QO ~~S~~N\_MY M\_ OX ~~S~~Z~~V~~ ~~V~~KNSQ YK ~~V~~a O  
 Wkb~~S~~V\_W Y\_Z\_ M\_ OX

RO=- O\_SO KX ~~C~~ O X~~V~~MK MRNSNO LOa COX RO=A Z~~S~~KXN 18. RO O~~V~~MON NSNO W\_ RK OK  
 O O O YKQO K~~S~~QO\_KVYY QCK O RKX ~~3~~ Wkb RO ZCKUM\_ OX K~~S~~Q YP RONSNO W\_ LOQCK O RKX  
 RO Wkb~~S~~V\_W ~~S~~N\_MY M\_ OX =MRY ~~V~~ NSNO K O cZ~~S~~K~~V~~ K QYN MRY~~S~~OPY RO MK MRNSNO N\_ O Y ROS ~~V~~a  
 P~~V~~aKN YKQO RO ~~V~~a O ROPY aKN YKQO YP RONSNO RORSRO RO ~~C~~PM~~V~~ YP RO ~~C~~Q\_ ~~V~~Y

cZ~~S~~K~~V~~ NSNO a ~~S~~RR~~S~~RO YKQOKXNM\_ OX K~~S~~Q RK OR~~S~~RO P~~V~~aKN YKQO + NSNO a ~~S~~RK W~~S~~SV\_W YP  
 O O O YKQOS Z~~C~~PO ON YK~~V~~a ~~S~~Z\_ YKQO KX ~~S~~X \_Z Y RO K ON YKQO YP RO=-

0Y RO ~~C~~kwz~~V~~NO ~~S~~X RO, + 0=MRY ~~V~~ NSNOS O~~V~~MONPY S ~~V~~a O P~~V~~aKN YKQOKXN QYN RO Wkb~~S~~V\_W  
 MK KMOS ~~S~~ M MWZK ON Y Wkb NO ~~S~~D RO cZ~~S~~K~~V~~ P~~V~~aKN YKQO YP RO, + 0 S YV K +

RONSNO W\_ K V Y LO O~~V~~MON a ~~S~~RKXKZZ YZ ~~S~~K O Z~~V~~a O K~~S~~Q RONSNO MYN\_M RO Y\_Z\_ M\_ OX N\_ ~~S~~Q  
 RO YP ~~S~~VO YP RO ~~S~~K O X~~V~~Z~~V~~a O a ~~S~~VR RO YP ~~S~~VO YP RO ~~S~~K O X~~V~~ a ~~S~~VR S K P\_XMS~~X~~ YP RO Wkb~~S~~V\_W ~~S~~Z\_  
 YKQO RO Y\_Z\_ YKQO KXN RO a ~~S~~RSQPO\_O~~X~~Mt RO Y\_Z\_ M\_ OX N\_ ~~S~~Q RO YP ~~S~~VO S W ~~V~~Z~~V~~EN Lc RO  
 P~~V~~aKN YKQO YP RONSNO Y MKW~~V~~ K O RO ~~S~~X K~~X~~KXOY\_ MYN\_M~~S~~X~~V~~ O YP RONSNO + ~~S~~RO a ~~S~~RSQ  
 PO\_O~~X~~Mt RO KM~~V~~ O YP RONSNO XON Y LO K~~V~~OX ~~S~~K Y KMM~~V~~\_X RO KM~~V~~ O YP RONSNO K ON\_ O Y RO  
 MK ~~C~~SQKXN NSMK ~~C~~SQ YP ROT\_XMS~~X~~MKZ~~V~~K~~V~~MDKXN O O O ~~C~~MY O c~~V~~MRK QO / \_K~~S~~X S\_ ON Y MKW~~V~~ K O  
 RO YK~~V~~Z~~V~~a O NS ~~S~~Z~~V~~ ~~S~~X ~~S~~M~~V~~NSQMYN\_M~~S~~X~~V~~ O KXN KM~~V~~ O YP RONSNO



---

MKZKMSY ~~SD~~ MOKW~~S~~ MKZKMSY 0Y MOKW~~S~~ MKZKMSY RO MKZKMSXMD NYWSKO RO Y\_Z\_ SZO 0Y  
SZ~~SD~~ SX ROY\_Z\_ YKQO SZ~~SD~~ MKXLOO ~~SK~~ ON Lc / \_K SX NO SON

A RO O

- S ROY\_Z\_ YKQO SZO
- P<sub>A</sub> S RO a ~~S~~RSQPO\_OX~~W~~
- 6 S RO ~~S~~N MKXMDYPS~~N~~ MY
- - 9 S ROY\_Z\_ MKZKMSXMD
- 9 S ROY\_Z\_ YKQO
- 3 S RO ~~S~~Z\_ YKQO

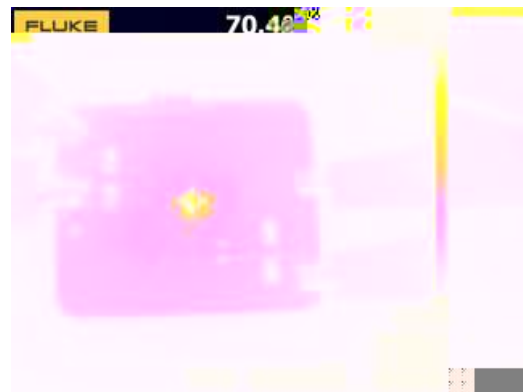
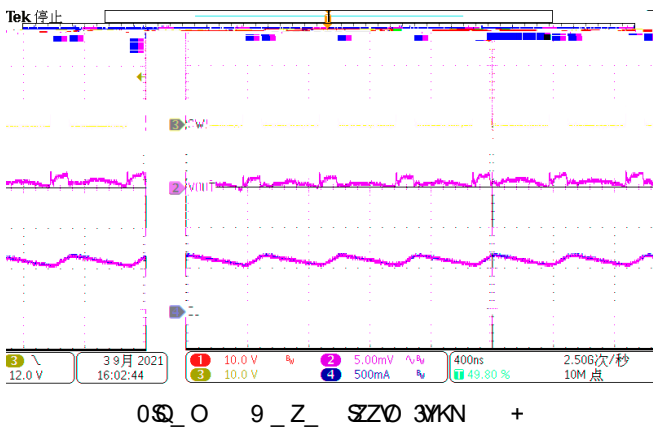
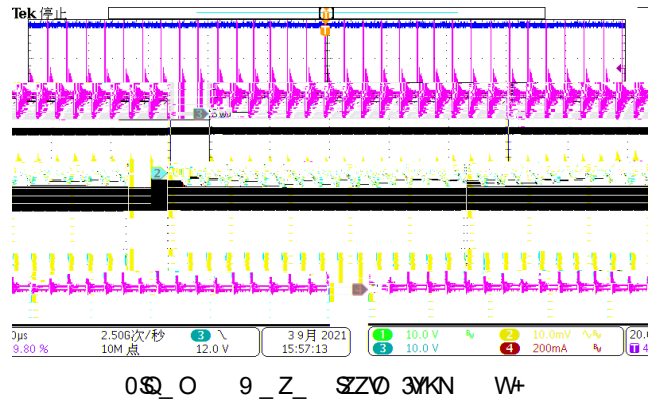
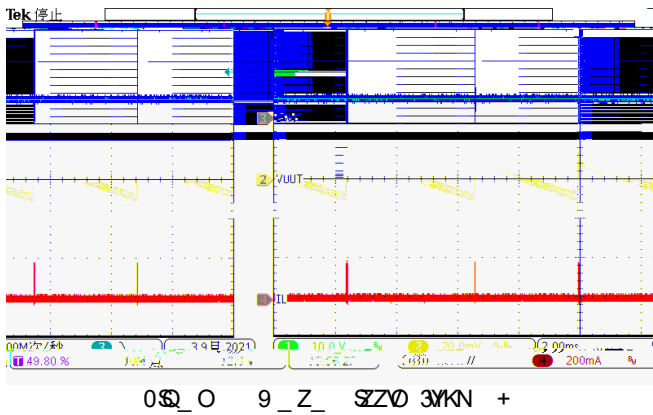
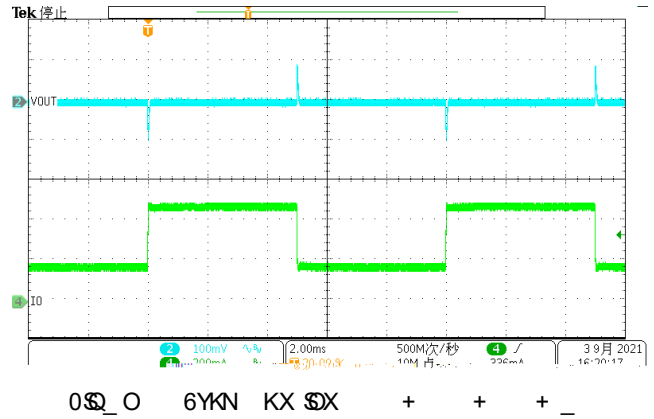
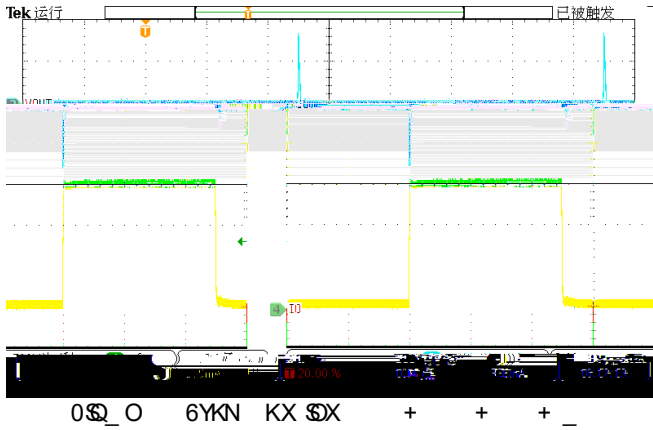
. \_O YMKZKMSY NOQKNSQ\_XNO . - L~~S~~ ROL~~S~~ YKQOMKX ~~S~~X~~S~~KX~~W~~ ON MD MKZKMSXMD - OKW~~S~~  
MKZKMSY MKX~~Y~~ OWY YPROS MKZKMSXMDK KON YKQO ROOPYO ~~OK~~ OWK ~~OS~~ YX RO YKQO K SQ Y  
OX \_OKNO \_KOOPMSOMKZKMSXMD cZ~~S~~K~~W~~ YXO 0 MOKW~~S~~ Y\_Z\_ MKZKMSY aYUPY WY KZZ~~S~~K SX




0Y WYOSPYWK SXaaa SMXOX MW



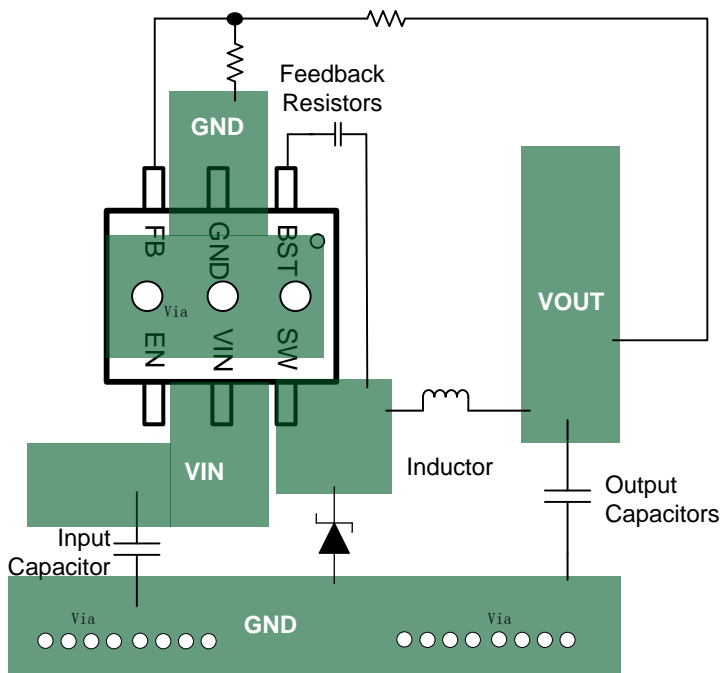
SX Y\_ \_X0 YROaSOXYCN



0 0 RO WKV 3 Y\_ +

RO CQ K Y MY W PD PYW S K L S c K X N X Y S O Z Y L W a S R Y \_ M K O P W K c Y \_ Y P : - , K N S S X Y P R S R  
 PO \_ O M t X Y S O S N \_ M D / 7 3 Y Z Y Z O K c Y \_ Y P R O R S R P O \_ O M t a S M R S Q Z K R S O O X S V

1. 7 S S V S O R O D X Q R K X N K C K Y P K W K M D M Y X X O M O N Y R O = A Z S K X N K a K c \_ O K Q Y \_ X N Z K X O \_ X N O R O  
 a S M R S Q C Q \_ K Y Y W S S V S O M Y \_ Z S Q
2. R O S Z \_ M K Z K M S Y X C O N Y L O O c M Y O Y R O B Z S K X N 1 8 . Z S K Y C N \_ M D R O S Z \_ \_ Z Z v S Z V D : K M D  
 K Y a / = M D K W S M K Z K M S Y K M Y O Y B Z S K X N R O Q Y \_ X N K Z Y S V O Y C N \_ M D Z K K S M O P O M
3. 9 \_ Z \_ S N \_ M Y R Y \_ W L O Z K M O N M Y O Y R O = A Z S R O K C K Y P R O : - , M X N \_ M Y W S S V S O N Y Z O O X  
 O b M D S O M K Z K M S O M Y \_ Z S Q
4. 6 9 K N T \_ K X N O S Y W Y Z M W Z O X K S X K X N F O O N L K M U M W Z Y X O X R Y \_ W M Y X X O M Y W K W S X K V  
 Q Y \_ X N a R S R W \_ O \_ X Y R O 1 8 . Z S a S R Y \_ K X c S K O V K S Q a S R Z Y a O Q Y \_ X N
5. Y \_ O , 9 9 M K Z K M S Y K M D Y X R O Y R O K c O R K X Y Z K c O Y Z Y S I O a S I O Z K R P Y Y Z S I O Q Y \_ X N
6. R O K c Y \_ X C O N L O N Y X O a S R a O W M X S I O K S X Y P R O R O W K V + K C O Y Z K c O Q Y \_ X N Z K O \_ S Q W \_ V S D  
 R O W K V S S \_ C N Y S V Z Y O R O R O W K V N S S Z K S X R O L Y Y W K c O S K K C O Q Y \_ X N Z K X O M Y X X O M O N Y  
 R O Y Z K c O Q Y \_ X N L c S



0 S \_ O : - , 6 K c Y \_ / b K W Z D

---

ROWKbSV\_W3 T\_XMSX OWZOK\_O RY\_WLO O \$ION Y - \_XNO XY WKVZOK SQMYXNSX - KWI\_K O  
ROWKbSV\_WKWa\_KLONS SK SX : . Wkb KXNUOZ ROKM\_KVZYa O NS SK SX V RKXY O \_KVY: . Wkb RO  
WkbSV\_WZYa O NS SK SX WVS S NOO WSON\_ SQ/ \_K SX

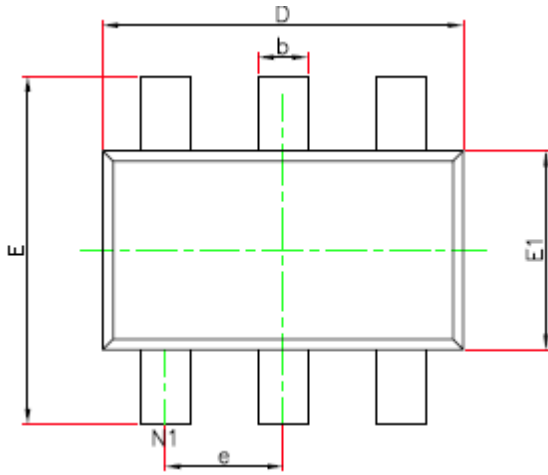
(14)

a ROO

- + S ROWKbSV\_WKWL\$X OWZOK\_OPY ROKZZ\$K SX
- 4+ S ROT\_XMSX YKWL\$X ROWKV O S KXMDQSOX SK RO ROWKV3PY WK SX KL V

RO CKVT\_XMSX YKWL\$X ROWKV O S KXMD 4+ YP RO ZKMLKQO QOK V NOZOXN YX RO: - , cZO KcY\_  
ROWKVZKNMXXOMSYXKXNOX SYXWOXKPKMY SQ RSU: - , MYZZO KXN YWO SQ RO1 8. YK K QQY\_XN  
ZK O OXRKXMD RO ROWKVZOPY WKXMD SQ WY O \$ MYXOM RO QY\_XN ZK O YX RO YZ KcO KXN LY YW  
KcO K Y\_XN RO3 a SRY\_ YWO WK UKVY OXRKXMD RO ROWKVMKZKLS&

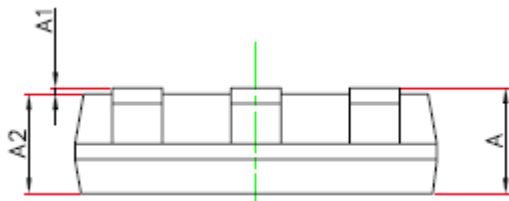
# PACKAGE INFORMATION



9: 3A



,9 97 3A



= 3 / 3A

+			
+			
+			
.			
/			
/			
L			
M			
O			, =-
6			
	è		è

1. . Ka SQZYZY ON YLOWKNOK 4/ . / - ZKMKQDY\_ 079  
K SX
2. . Ka SQXY Y MKØ
3. + WCK NSVOX SX K OSKWSVOO
4. RO WKVZKN RKWLO YMO CN YX ROLYKN
5. . SVOX SX YPOZY ON ZKN YXLY YWYPZKMKQON XY  
SM/NO WYWP R
6. - YXKM: - , LYKNFKL SK SXPY WSV\_W YMO WK Ua CL  
YØKXMO LOa COX ROZSK

---

## TAPE AND REEL INFORMATION