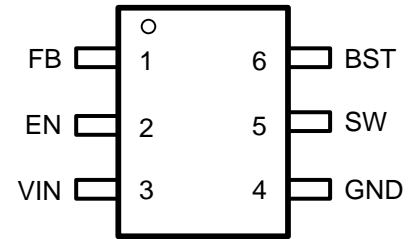




<b>H9 L FME :</b>	<b>H9 C9 E9 CÆ</b>	<b>H9 C9 K AILÆF</b>
1)		

Over operating free-air temperature unless otherwise noted<sup>(1)</sup>

<b>DESCRIPTION</b>	<b>MIN</b>	<b>MAX</b>	<b>UNIT</b>
BST	-0.3	40	V
VIN, SW, EN	-0.3	34	V
FB	-0.3	5.5	V
Operating junction temperature <sup>(2)</sup>	-40	125	°C
Storage temperature T <sub>STG</sub>	-65	150	°C



Top View: TSOT23-6L, Plastic

(1)  
(2)

**F9E FG**

**HÆ MF LÆF LÆ**

---

BST	6	Power supply for the high-side power MOSFET gate driver. Must connect a 0.1uF or greater ceramic capacitor between BST pin and SW node.
-----	---	---

---

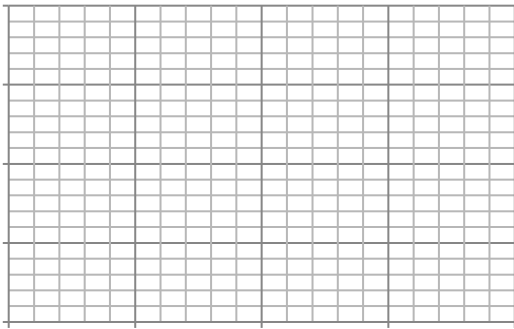
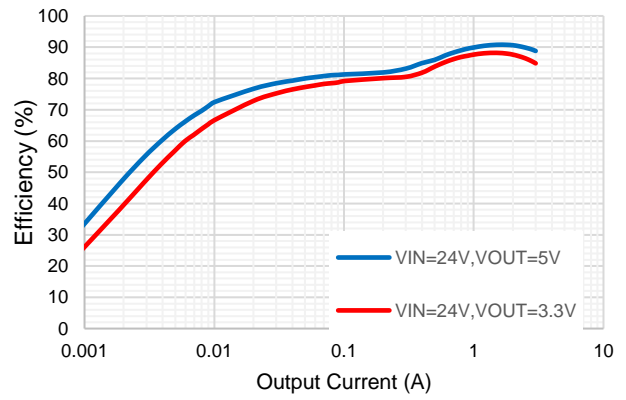
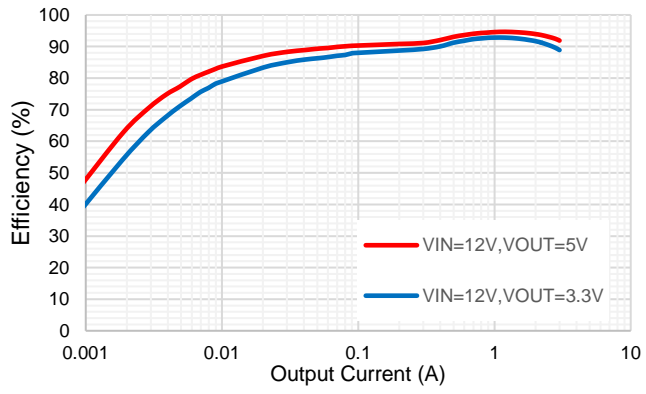
<b>H9 9E L</b>	<b>FAAGF</b>	<b>EA</b>	<b>E9P</b>	<b>MFA</b>

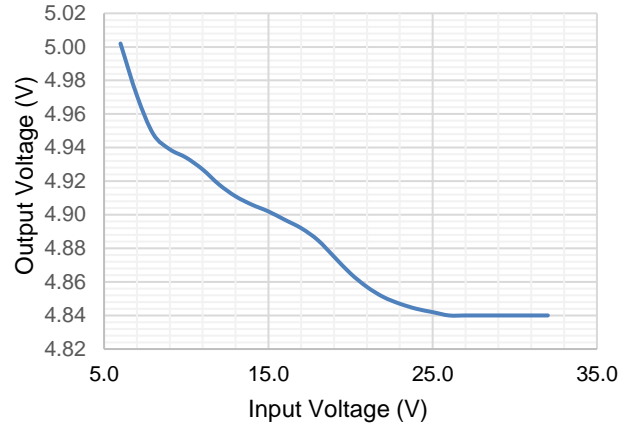
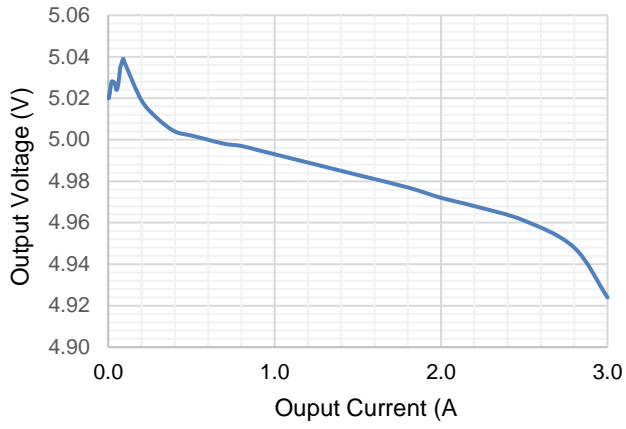
<b>H9 9E L</b>	<b>FAAGF</b>	<b>EA</b>	<b>E9P</b>	<b>MFA</b>
----------------	--------------	-----------	------------	------------

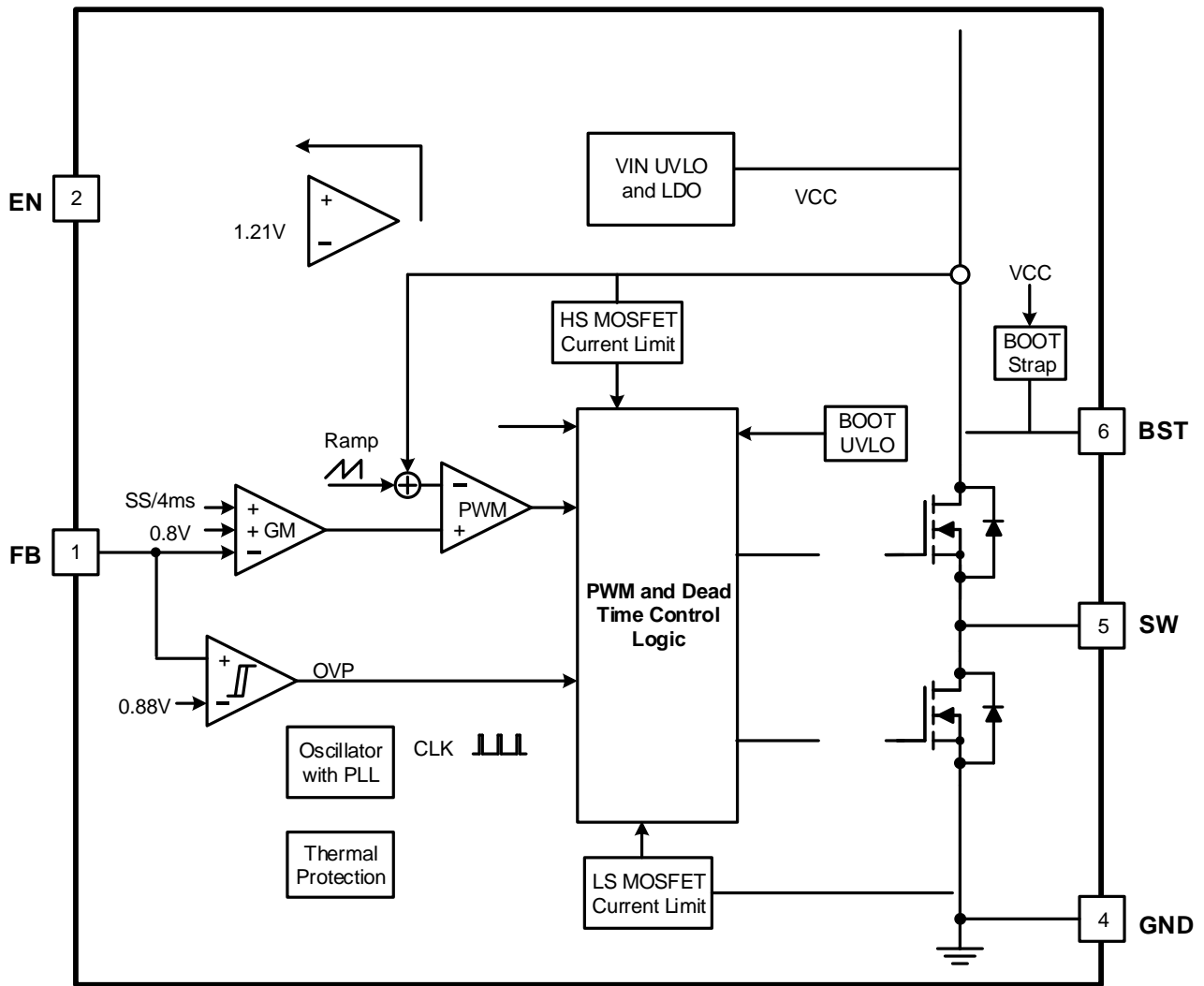
# K L

---

KQE: GD	H9 9E L	L KL GF AAF	EÆ LQH E9P	MFA
Y cY	9e da			
Dæ a				
K a a				
K KY Læ				
H a				







a 1 a Yd: d c a/ Ye

K L

---

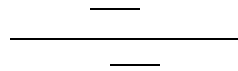
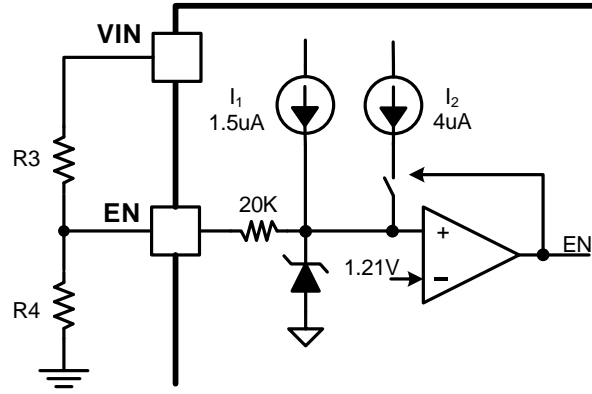
G a

NÆ H

M N dY D c MNDG

Y dY KY





(1)



(2)

K a a F a a

K L

---

H Yc Dæ a Y a E

G N dY H a Y Eaæ e G æ

HKE O ca E

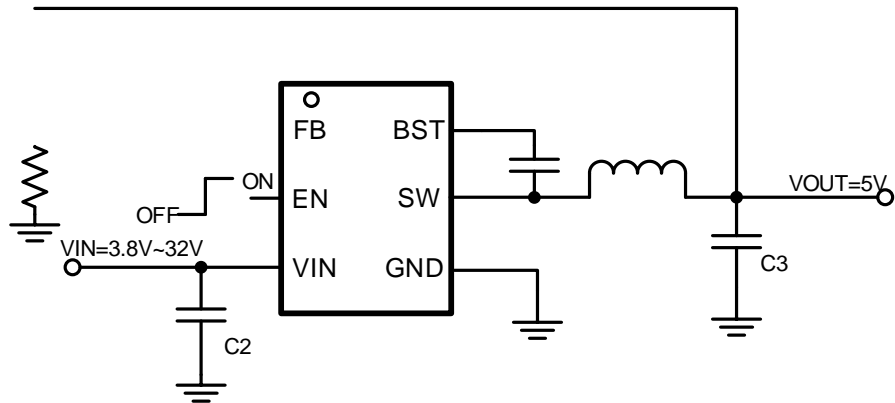
D

d a

L e YdK

o

L a Yd9 d Y a



020BST028uHT BT 1 0 0 1 317.65 63..56 65.94(3) T J E 228 92.476 2254 Tm 031563 T5.94(3)I

a , N A - N 9 G

a H Y Y e

Design Parameters	Example Value
Input Voltage	24V
Output Voltage	5V
Output Current	3A
Output voltage ripple (peak to peak)	±0.3V
Switching Frequency	400kHz

A Y Y a K d a

(3)

\_\_\_\_\_

- 
- 
- 

A K d a

(4)

\_\_\_\_\_

- 

(5)

\_\_\_\_\_

K L

---

G Y Y a K d a

\_\_\_\_\_

(6)

•  
•  
•

G            Y   Y Y a   K d a

\_\_\_\_\_

(10)

G            Y c   a   a a   K d a

\_\_\_\_\_

(11)

LY d            e e            Yd e


9 dYa OY e

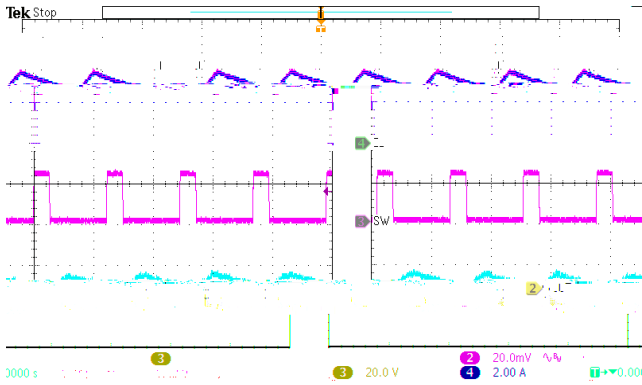


Figure 16. SW node waveform and Output Ripple  
VIN=24V, IOU=3A

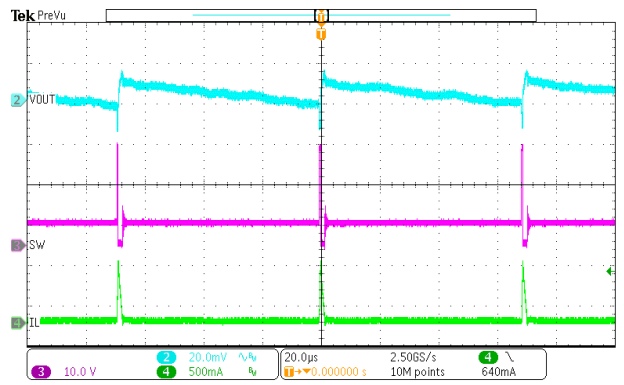


Figure 17. SW node Waveform and Output Ripple  
VIN=24V, IOU=10mA

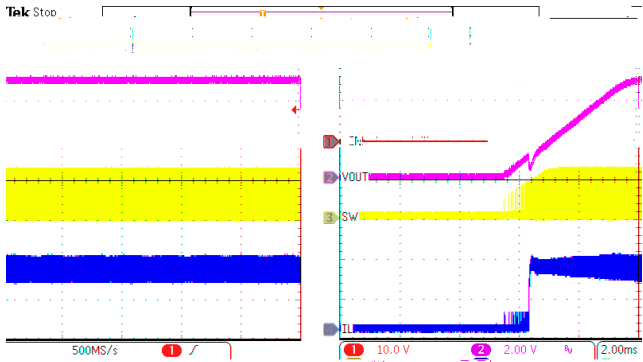


Figure 18. Power Up  
VIN=24V, VOUT=5V, IOU=3A

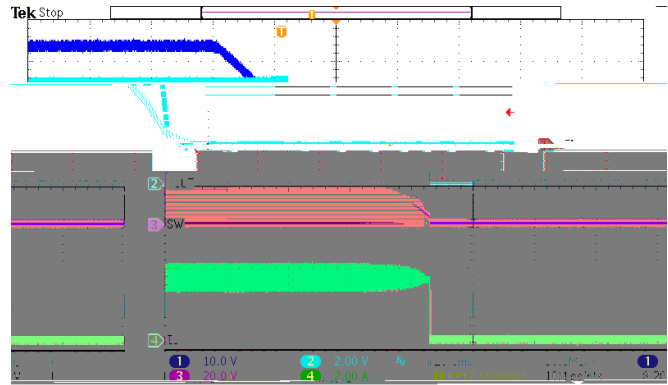


Figure 19. Power Down  
VIN=24V, VOUT=5V, IOU=3A

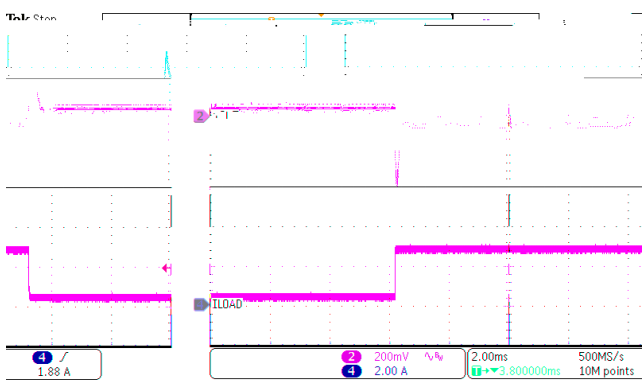


Figure 20. Load Transient  
VOUT=5V, IOU=0.3A to 2.7A, SR=250mA/us

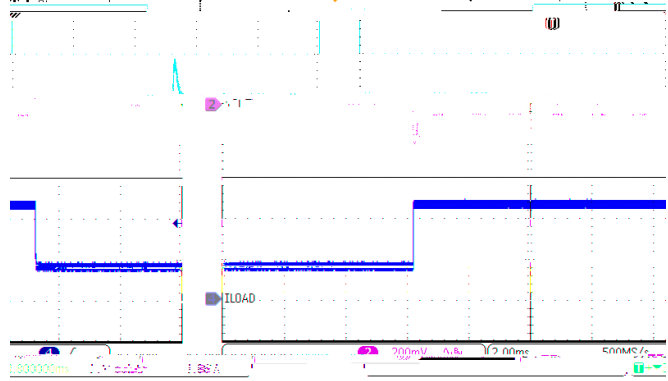


Figure 21. Load Transient  
VOUT=5V, IOU=0.75A to 2.25 A, SR=250mA/us



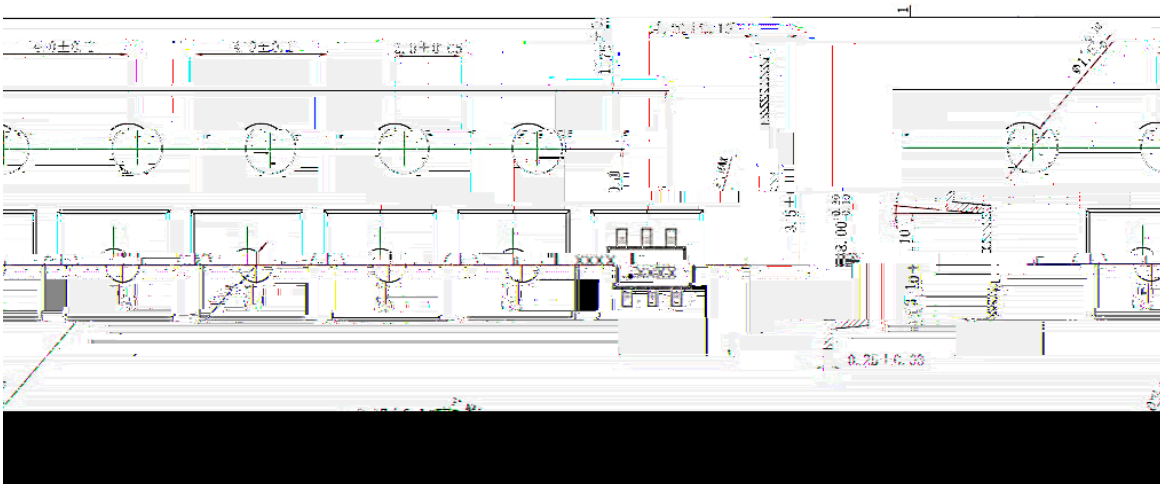
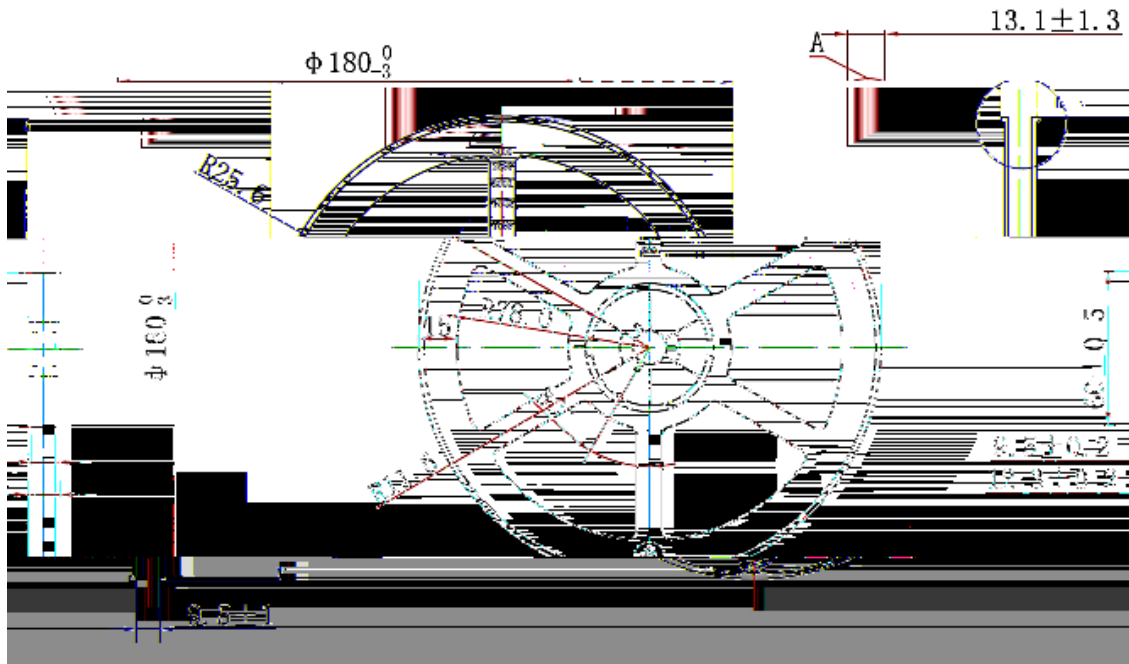


**K L**

---

**FGL 2**

1.



a a a



